

## CCL2 Antibody

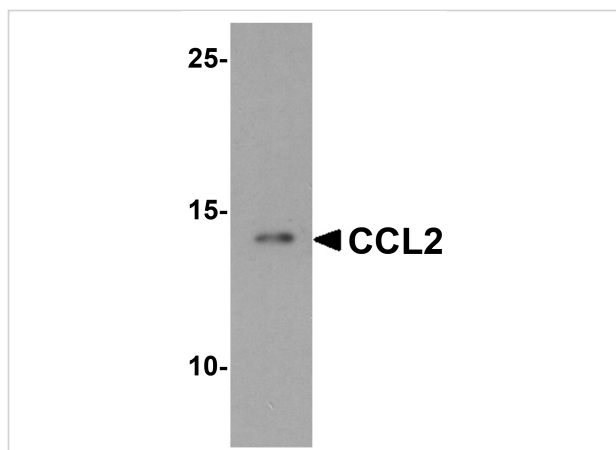
CATALOG NUMBER: 7201

### Specifications

Host Species	Rabbit
Species Reactivity	Human, Mouse, Rat
Homology	Predicted species reactivity based on immunogen sequence: Pig: (81%), Horse: (81%), Bovine: (75%), Rabbit: (75%), Guinea pig: (90%)
Immunogen	Rabbit polyclonal CCL2 antibody was raised against a 17 amino acid peptide near the carboxy terminus of human CCL2. The immunogen is located within the last 50 amino acids of CCL2.
Conjugate	Unconjugated
Tested Applications	ELISA, IF, IHC-P, WB
User Note	Optimal dilutions for each application to be determined by the researcher.
Predicted Molecular Weight	Predicted: 11 kDa Observed: 14 kDa

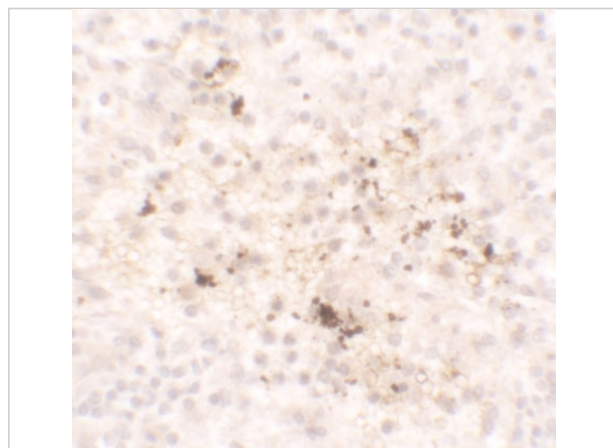
### Properties

Purification	CCL2 Antibody is affinity chromatography purified via peptide column.
Clonality	Polyclonal
Isotype	IgG
Physical State	Liquid
Buffer	CCL2 Antibody is supplied in PBS containing 0.02% sodium azide.
Concentration	1 mg/mL
Storage Conditions	CCL2 antibody can be stored at 4°C for three months and -20°C, stable for up to one year.



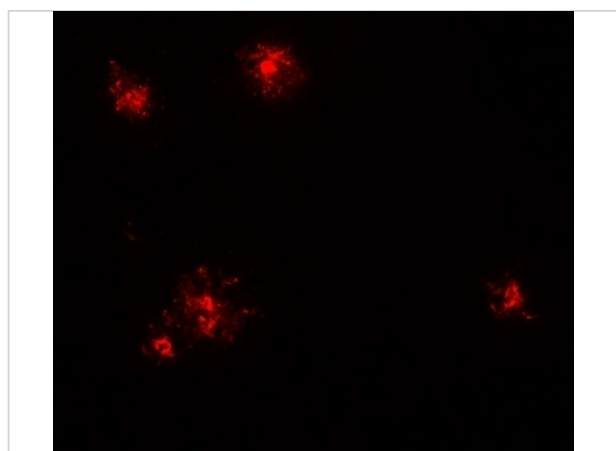
### CCL2 Antibody 1

Western blot analysis of CCL2 in K562 cell lysate with CCL2 antibody at 1 µg/mL.



### CCL2 Antibody 2

Immunohistochemistry of CCL2 in human spleen tissue with CCL2 antibody at 5 µg/mL.



### CCL2 Antibody 3

Immunofluorescence of CCL2 in human spleen tissue with CCL2 antibody at 20 µg/mL.

## Disclaimer

#### Disclaimer

Optimal dilutions/concentrations should be determined by the end user. The information provided is a guideline for product use. This product is for research use only.

For research use only. For additional information, visit ProSci's [Terms and Conditions Page](#).