

CRB1 Antibody

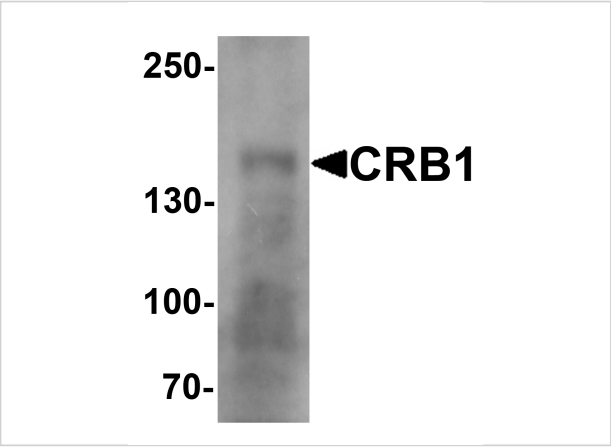
CATALOG NUMBER: 7153

Specifications

Host Species	Rabbit
Species Reactivity	Human
Homology	Predicted species reactivity based on immunogen sequence: Mouse: (82%)
Immunogen	Rabbit polyclonal CRB1 antibody was raised against an 18 amino acid peptide near the center of human CRB1. The immunogen is located within amino acids 780 - 830 of CRB1.
Conjugate	Unconjugated
Tested Applications	ELISA, WB
User Note	Optimal dilutions for each application to be determined by the researcher.
Specificity	Alternatively spliced transcript variants have been observed. CRB1 antibody is predicted to not cross-react with CRB2.
Predicted Molecular Weight	Predicted: 142 kDa

Properties

Purification	CRB1 Antibody is affinity chromatography purified via peptide column.
Clonality	Polyclonal
Isotype	IgG
Physical State	Liquid
Buffer	CRB1 Antibody is supplied in PBS containing 0.02% sodium azide.
Concentration	1 mg/mL
Storage Conditions	CRB1 antibody can be stored at 4°C for three months and -20°C, stable for up to one year.



CRB1 Antibody 1

Western blot analysis of CRB1 in human small intestine Tissue lysate with CRB1 antibody at 1 µg/mL.

Disclaimer

Disclaimer	Optimal dilutions/concentrations should be determined by the end user. The information provided is a guideline for product use. This product is for research use only.
------------	------------------------------------------------------------------------------------------------------------------------------------------------------------------------

For research use only. For additional information, visit ProSci's [Terms and Conditions Page](#).