

GDF1 Antibody

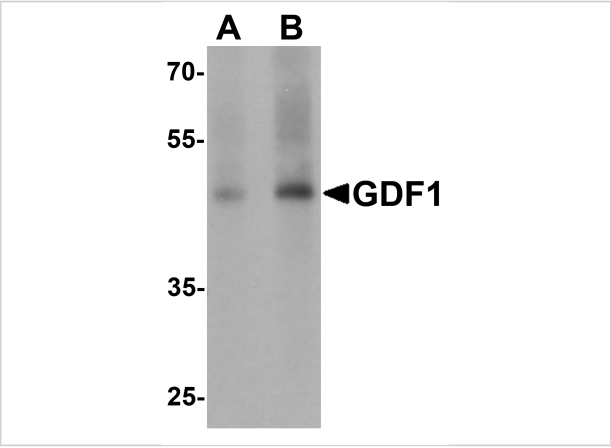
CATALOG NUMBER: 7093

Specifications

Host Species	Rabbit
Species Reactivity	Human, Mouse, Rat
Immunogen	Rabbit polyclonal GDF1 antibody was raised against a 16 amino acid peptide near the amino terminus of human GDF1. The immunogen is located within amino acids 30 - 80 of GDF1.
Conjugate	Unconjugated
Tested Applications	ELISA, IF, WB
User Note	Optimal dilutions for each application to be determined by the researcher.
Specificity	GDF1 antibody is predicted to not cross-react with any other members of the growth differentiation factor family.
Predicted Molecular Weight	41 kDa

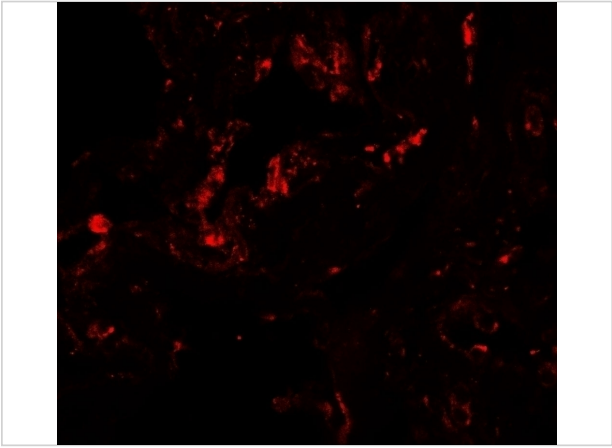
Properties

Purification	GDF1 Antibody is affinity chromatography purified via peptide column.
Clonality	Polyclonal
Isotype	IgG
Physical State	Liquid
Buffer	GDF1 Antibody is supplied in PBS containing 0.02% sodium azide.
Concentration	1 mg/mL
Storage Conditions	GDF1 antibody can be stored at 4°C for three months and -20°C, stable for up to one year. As with all antibodies care should be taken to avoid repeated freeze thaw cycles. Antibodies should not be exposed to prolonged high temperatures.



GDF1 Antibody 1

Western blot analysis of GDF1 in rat lung tissue lysate with GDF1 antibody at (A) 1 and (B) 2 µg/mL.



GDF1 Antibody 2

Immunofluorescence of GDF1 in human lung tissue with GDF1 antibody at 20 µg/mL.

Disclaimer

Disclaimer	Optimal dilutions/concentrations should be determined by the end user. The information provided is a guideline for product use. This product is for research use only.
------------	--

For research use only. For additional information, visit ProSci's [Terms and Conditions Page](#).