

LNPEP Antibody

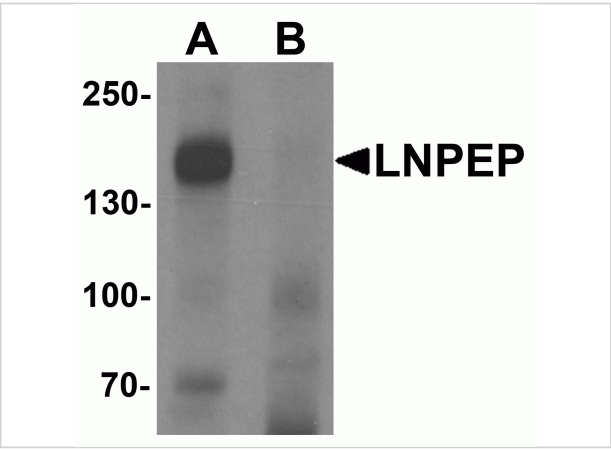
CATALOG NUMBER: 7055

Specifications

Host Species	Rabbit
Species Reactivity	Human
Homology	Predicted species reactivity based on immunogen sequence: Mouse: (73%), Rat: (73%)
Immunogen	LNPEP antibody was raised against a 15 amino acid synthetic peptide near the carboxy terminus of human LNPEP. The immunogen is located within amino acids 900 - 950 of LNPEP.
Conjugate	Unconjugated
Tested Applications	ELISA, IF, WB
User Note	Optimal dilutions for each application to be determined by the researcher.
Specificity	At least three isoforms are known to exist; this antibody will detect all three isoforms. Despite its predicted molecular weight, LNPEP often migrates at 165kD in SDS-PAGE.
Predicted Molecular Weight	113 kDa

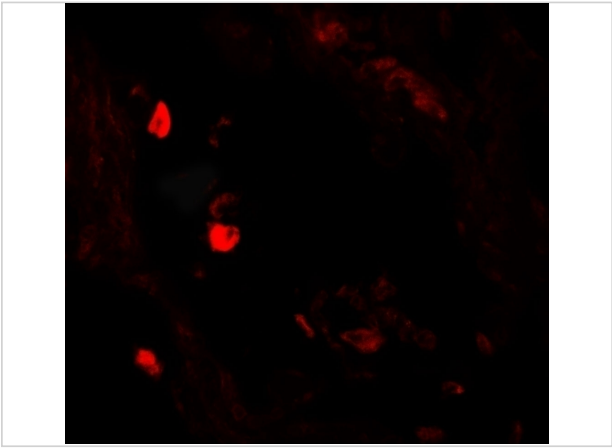
Properties

Purification	LNPEP Antibody is affinity chromatography purified via peptide column.
Clonality	Polyclonal
Isotype	IgG
Physical State	Liquid
Buffer	LNPEP Antibody is supplied in PBS containing 0.02% sodium azide.
Concentration	1 mg/mL
Storage Conditions	LNPEP antibody can be stored at 4°C for three months and -20°C, stable for up to one year. As with all antibodies care should be taken to avoid repeated freeze thaw cycles. Antibodies should not be exposed to prolonged high temperatures.



LNPEP Antibody 1

Western blot analysis of LNPEP in human lung tissue lysate with LNPEP antibody at 1 µg/mL in (A) the absence and (B) the presence of blocking peptide.



LNPEP Antibody 2

Immunofluorescence of LNPEP in human lung tissue with LNPEP antibody at 20 µg/mL.

Disclaimer

Disclaimer	Optimal dilutions/concentrations should be determined by the end user. The information provided is a guideline for product use. This product is for research use only.
------------	--

For research use only. For additional information, visit ProSci's [Terms and Conditions Page](#).