

SHQ1 Antibody

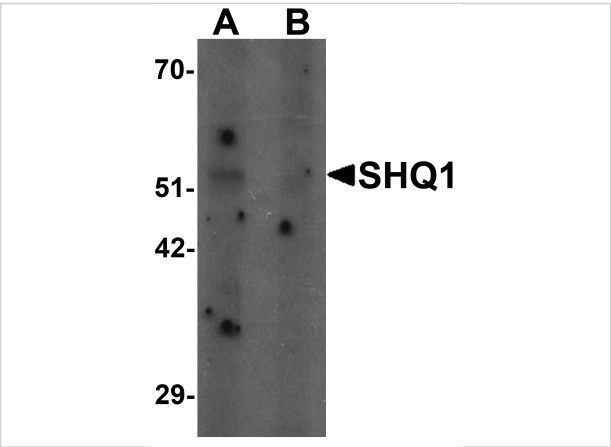
CATALOG NUMBER: 7029

Specifications

Host Species	Rabbit
Species Reactivity	Human
Homology	Predicted species reactivity based on immunogen sequence: Bovine: (100%), Mouse: (94%)
Immunogen	SHQ1 antibody was raised against a 17 amino acid synthetic peptide near the amino terminus of human SHQ1. The immunogen is located within amino acids 80 - 130 of SHQ1.
Conjugate	Unconjugated
Tested Applications	ELISA, IF, WB
User Note	Optimal dilutions for each application to be determined by the researcher.
Specificity	Multiple isoforms are known to exist.
Predicted Molecular Weight	63 kDa

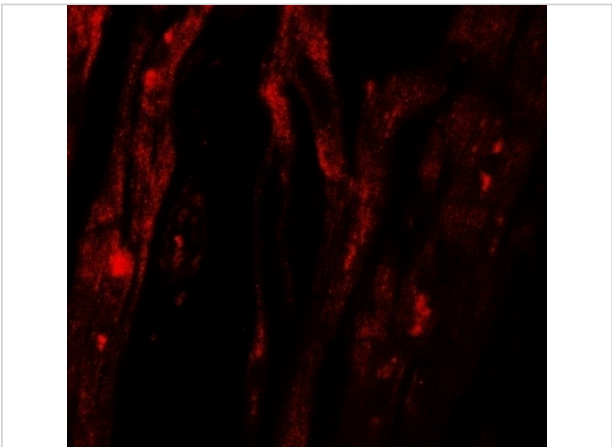
Properties

Purification	SHQ1 Antibody is affinity chromatography purified via peptide column.
Clonality	Polyclonal
Isotype	IgG
Physical State	Liquid
Buffer	SHQ1 Antibody is supplied in PBS containing 0.02% sodium azide.
Concentration	1 mg/mL
Storage Conditions	SHQ1 antibody can be stored at 4°C for three months and -20°C, stable for up to one year. As with all antibodies care should be taken to avoid repeated freeze thaw cycles. Antibodies should not be exposed to prolonged high temperatures.



SHQ1 Antibody 1

Western blot analysis of SHQ1 in human heart tissue lysate with SHQ1 antibody at 1 µg/mL in (A) the absence and (B) the presence of blocking peptide.



SHQ1 Antibody 2

Immunofluorescence of SHQ1 in human heart tissue with SHQ1 antibody at 20 µg/mL.

Disclaimer

Disclaimer	Optimal dilutions/concentrations should be determined by the end user. The information provided is a guideline for product use. This product is for research use only.
------------	--

For research use only. For additional information, visit ProSci's [Terms and Conditions Page](#).