

## CDKN1C Antibody

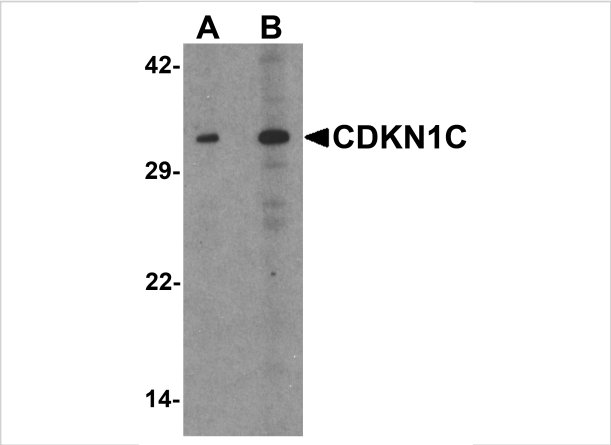
CATALOG NUMBER: 7015

### Specifications

Host Species	Rabbit
Species Reactivity	Human
Homology	Predicted species reactivity based on immunogen sequence: Mouse: (88%)
Immunogen	CDKN1C antibody was raised against a 17 amino acid synthetic peptide near the amino terminus of human CDKN1C. The immunogen is located within amino acids 40 - 90 of CDKN1C.
Conjugate	Unconjugated
Tested Applications	ELISA, IF, WB
User Note	Optimal dilutions for each application to be determined by the researcher.
Specificity	At least three isoforms of CDKN1C are known to exist; this antibody will detect all three isoforms. Despite its predicted molecular weight, CDKN1C often migrates at 57kDa in SDS-PAGE. CDKN1C antibody is predicted to not cross react with other CIP/KIP proteins.
Predicted Molecular Weight	35 kDa

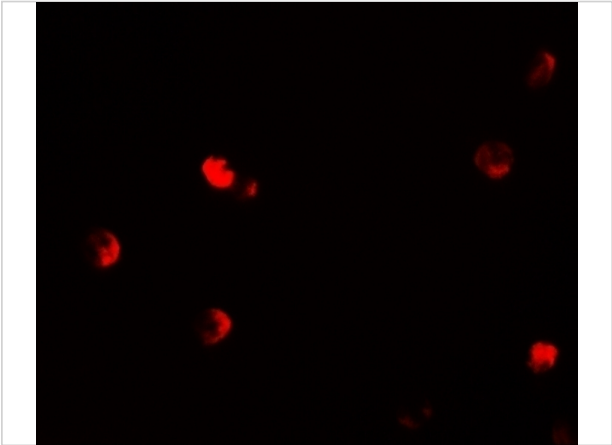
### Properties

Purification	CDKN1C Antibody is affinity chromatography purified via peptide column.
Clonality	Polyclonal
Isotype	IgG
Physical State	Liquid
Buffer	CDKN1C Antibody is supplied in PBS containing 0.02% sodium azide.
Concentration	1 mg/mL
Storage Conditions	CDKN1C antibody can be stored at 4°C for three months and -20°C, stable for up to one year. As with all antibodies care should be taken to avoid repeated freeze thaw cycles. Antibodies should not be exposed to prolonged high temperatures.



CDKN1C Antibody 1

Western blot analysis of CDKN1C in 293 cell lysate with CDKN1C antibody at (A) 1 and (B) 2 µg/mL.



CDKN1C Antibody 2

Immunofluorescence of CDKN1C in 293 cells with CDKN1C antibody at 20 µg/mL.

Disclaimer

Disclaimer	Optimal dilutions/concentrations should be determined by the end user. The information provided is a guideline for product use. This product is for research use only.
------------	--

For research use only. For additional information, visit ProSci's [Terms and Conditions Page](#).