

## TET3 Antibody

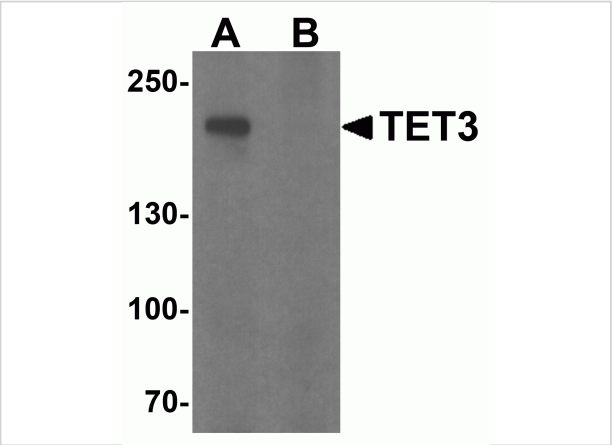
CATALOG NUMBER: 7013

### Specifications

Host Species	Rabbit
Species Reactivity	Human, Mouse, Rat
Immunogen	TET3 antibody was raised against a 17 amino acid synthetic peptide near the carboxy terminus of human TET3. The immunogen is located within amino acids 1520 - 1570 of TET3.
Conjugate	Unconjugated
Tested Applications	ELISA, IF, IHC-P, WB
User Note	Optimal dilutions for each application to be determined by the researcher.
Specificity	At least three isoforms of TET3 are known to exist. TET3 antibody is predicted to not cross react with other TET proteins.
Predicted Molecular Weight	183 kDa

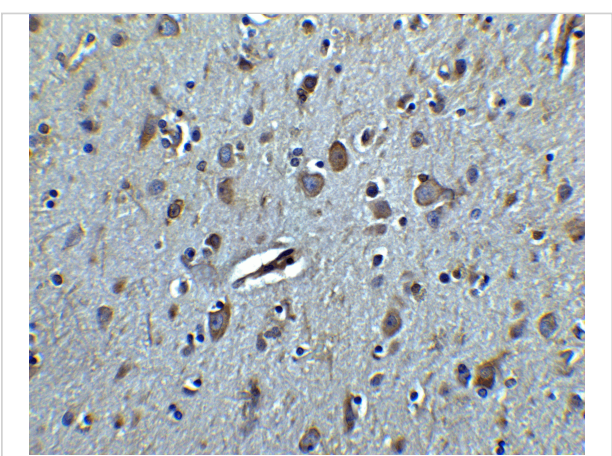
### Properties

Purification	TET3 Antibody is affinity chromatography purified via peptide column.
Clonality	Polyclonal
Isotype	IgG
Physical State	Liquid
Buffer	TET3 Antibody is supplied in PBS containing 0.02% sodium azide.
Concentration	1 mg/mL
Storage Conditions	TET3 antibody can be stored at 4°C for three months and -20°C, stable for up to one year. As with all antibodies care should be taken to avoid repeated freeze thaw cycles. Antibodies should not be exposed to prolonged high temperatures.



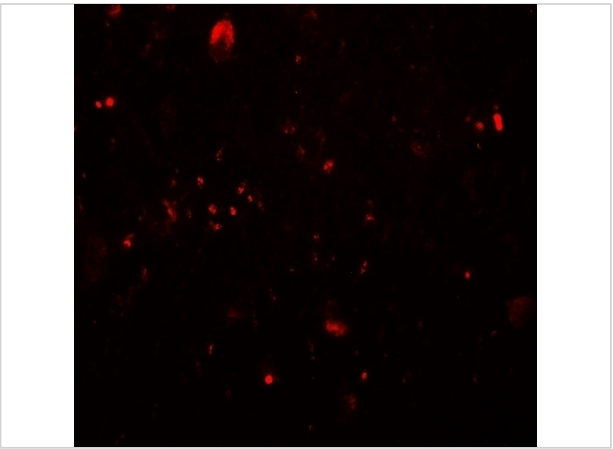
TET3 Antibody 1

Western blot analysis of TET3 in SK-N-SH cell lysate with TET3 antibody at 1 µg/ml in (A) the absence and (B) the presence of blocking peptide.



TET3 Antibody 2

Immunohistochemistry of TET3 in human brain tissue with TET3 antibody at 2.5 µg/ml.



TET3 Antibody 3

Immunofluorescence of TET3 in human brain tissue with TET3 antibody at 20 µg/mL.

Disclaimer

Disclaimer	Optimal dilutions/concentrations should be determined by the end user. The information provided is a guideline for product use. This product is for research use only.
------------	--

For research use only. For additional information, visit ProSci's [Terms and Conditions Page](#).