

XBP-1 Antibody

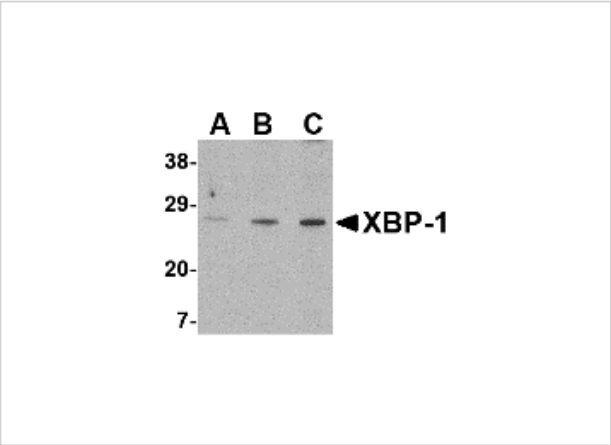
CATALOG NUMBER: 3685

Specifications

Host Species	Rabbit
Species Reactivity	Human, Mouse, Rat
Homology	Predicted species reactivity based on immunogen sequence: Bovine: (83%)
Immunogen	XBP-1 antibody was raised against a 17 amino acid synthetic peptide from near the carboxy terminus of human XBP-1. The immunogen is located within the last 50 amino acids of XBP-1.
Conjugate	Unconjugated
Tested Applications	ELISA, ICC, WB
User Note	Optimal dilutions for each application to be determined by the researcher.

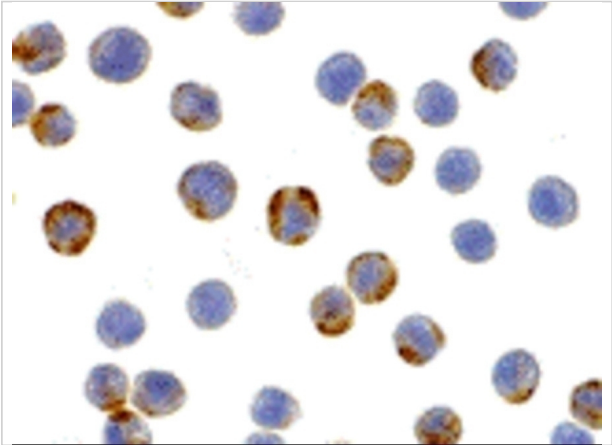
Properties

Purification	XBP-1 Antibody is affinity chromatography purified via peptide column.
Clonality	Polyclonal
Isotype	IgG
Physical State	Liquid
Buffer	XBP-1 Antibody is supplied in PBS containing 0.02% sodium azide.
Concentration	1 mg/mL
Storage Conditions	XBP-1 antibody can be stored at 4°C for three months and -20°C, stable for up to one year. As with all antibodies care should be taken to avoid repeated freeze thaw cycles. Antibodies should not be exposed to prolonged high temperatures.



XBP-1 Antibody 1

Western blot analysis of XBP-1 in PC-3 cell lysate with XBP-1 antibody at (A) 0.5, (B) 1 and (C) 2 µg/mL.



XBP-1 Antibody 2

Immunocytochemistry of XBP-1 in HepG2 cells with XBP-1 antibody at 2 µg/mL.

Disclaimer

Disclaimer	Optimal dilutions/concentrations should be determined by the end user. The information provided is a guideline for product use. This product is for research use only.
-------------------	--

For research use only. For additional information, visit ProSci's [Terms and Conditions Page](#).