

## NIBRIN Antibody

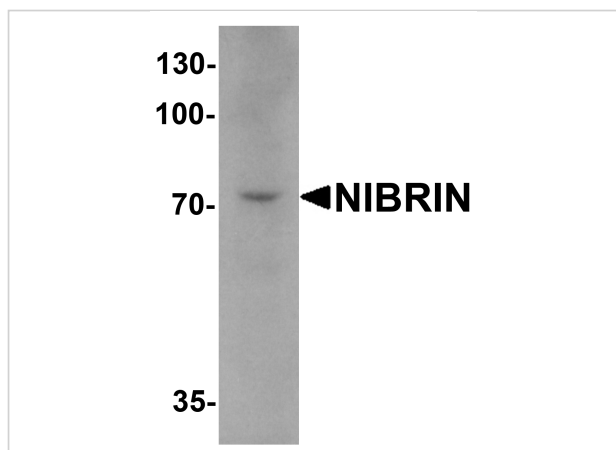
CATALOG NUMBER: 6839

### Specifications

Host Species	Rabbit
Species Reactivity	Human, Mouse
Homology	Predicted species reactivity based on immunogen sequence: Rat: (93%)
Immunogen	NIBRIN antibody was raised against a 15 amino acid synthetic peptide near the carboxy terminus of human NIBRIN. The immunogen is located within the last 50 amino acids of NIBRIN.
Conjugate	Unconjugated
Tested Applications	ELISA, IF, IHC-P, WB
User Note	Optimal dilutions for each application to be determined by the researcher.
Specificity	Two alternatively spliced transcript isoforms of NIBRIN are known to exist.

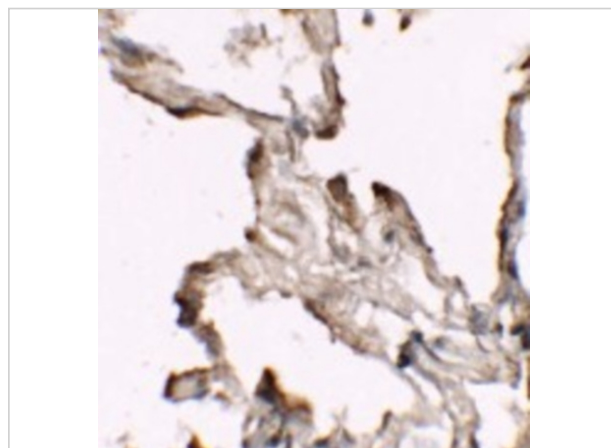
### Properties

Purification	NIBRIN Antibody is affinity chromatography purified via peptide column.
Clonality	Polyclonal
Isotype	IgG
Physical State	Liquid
Buffer	NIBRIN Antibody is supplied in PBS containing 0.02% sodium azide.
Concentration	1 mg/mL
Storage Conditions	NIBRIN antibody can be stored at 4°C for three months and -20°C, stable for up to one year. As with all antibodies care should be taken to avoid repeated freeze thaw cycles. Antibodies should not be exposed to prolonged high temperatures.



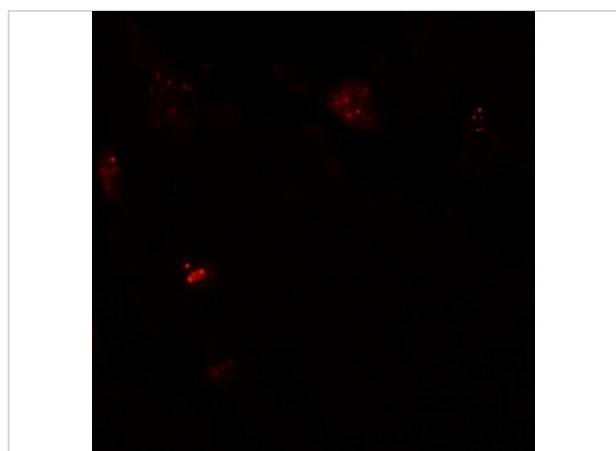
### NIBRIN Antibody 1

Western blot analysis of NIBRIN in mouse lung tissue lysate with NIBRIN antibody at 1 µg/mL.



### NIBRIN Antibody 2

Immunohistochemistry of NIBRIN (CT) in human lung tissue with NIBRIN (CT) antibody at 2.5 µg/mL.



### NIBRIN Antibody 3

Immunofluorescence of NIBRIN in human lung tissue with NIBRIN antibody at 20 µg/mL.

## Disclaimer

#### Disclaimer

Optimal dilutions/concentrations should be determined by the end user. The information provided is a guideline for product use. This product is for research use only.

For research use only. For additional information, visit ProSci's [Terms and Conditions Page](#).