

## WDR5 Antibody

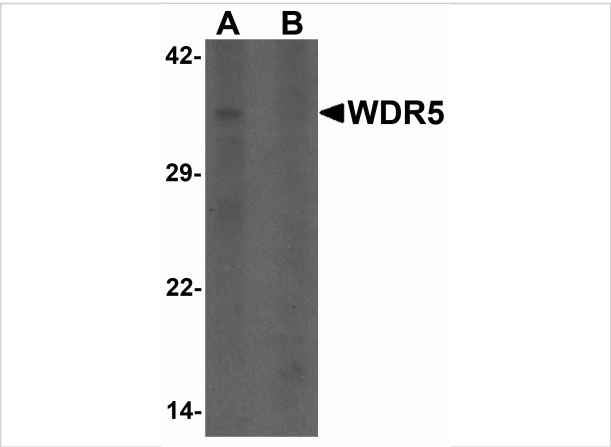
CATALOG NUMBER: 6823

### Specifications

Host Species	Rabbit
Species Reactivity	Human
Homology	Predicted species reactivity based on immunogen sequence: Rat: (100%), Mouse: (100%), Bovine: (100%)
Immunogen	WDR5 antibody was raised against a 19 amino acid synthetic peptide near the amino terminus of human WDR5. The immunogen is located within the first 50 amino acids of WDR5.
Conjugate	Unconjugated
Tested Applications	ELISA, ICC, IF, WB
User Note	Optimal dilutions for each application to be determined by the researcher.
Specificity	WDR5 antibody is human specific. WDR5 antibody is predicted to not cross-react with other WDR family members.

### Properties

Purification	WDR5 Antibody is affinity chromatography purified via peptide column.
Clonality	Polyclonal
Isotype	IgG
Physical State	Liquid
Buffer	WDR5 Antibody is supplied in PBS containing 0.02% sodium azide.
Concentration	1 mg/mL
Storage Conditions	WDR5 antibody can be stored at 4°C for three months and -20°C, stable for up to one year. As with all antibodies care should be taken to avoid repeated freeze thaw cycles. Antibodies should not be exposed to prolonged high temperatures.



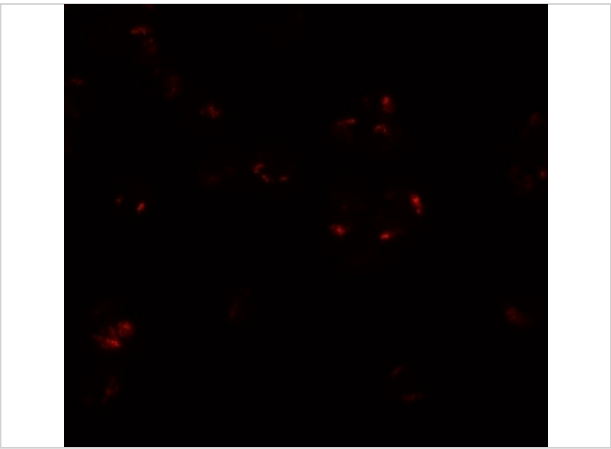
WDR5 Antibody 1

Western blot analysis of WDR5 in 293 cell lysate with WDR5 antibody at 1 µg/ml in (A) the absence and (B) the presence of blocking peptide.



WDR5 Antibody 2

Immunocytochemistry of WDR5 in 293 cells with WDR5 antibody at 5 µg/mL.



WDR5 Antibody 3

Immunofluorescence of WDR5 in 293 cells with WDR5 antibody at 20 µg/mL.

Disclaimer

Disclaimer	Optimal dilutions/concentrations should be determined by the end user. The information provided is a guideline for product use. This product is for research use only.
------------	--

For research use only. For additional information, visit ProSci's [Terms and Conditions Page](#).