

## TMEM106A Antibody

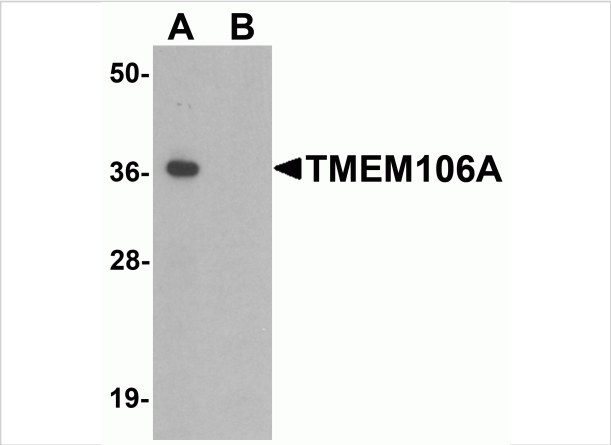
CATALOG NUMBER: 6781

### Specifications

Host Species	Rabbit
Species Reactivity	Human, Mouse
Immunogen	TMEM106A antibody was raised against a 14 amino acid synthetic peptide near the amino terminus of human TMEM106A. The immunogen is located within the first 50 amino acids of TMEM106A.
Conjugate	Unconjugated
Tested Applications	ELISA, IF, IHC-P, WB
User Note	Optimal dilutions for each application to be determined by the researcher.

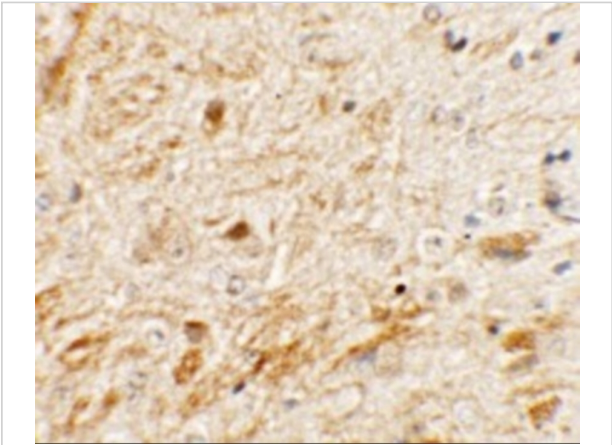
### Properties

Purification	TMEM106A Antibody is affinity chromatography purified via peptide column.
Clonality	Polyclonal
Isotype	IgG
Physical State	Liquid
Buffer	TMEM106A Antibody is supplied in PBS containing 0.02% sodium azide.
Concentration	1 mg/mL
Storage Conditions	TMEM106A antibody can be stored at 4°C for three months and -20°C, stable for up to one year. As with all antibodies care should be taken to avoid repeated freeze thaw cycles. Antibodies should not be exposed to prolonged high temperatures.



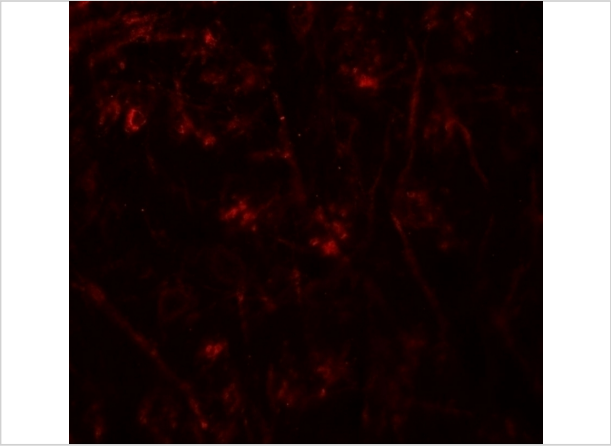
TMEM106A Antibody 1

Western blot analysis of TMEM106A in A-20 cell lysate with TMEM106A antibody at 1 µg/mL in (A) the absence and (B) the presence of blocking peptide.



TMEM106A Antibody 2

Immunohistochemistry of TMEM106A in mouse brain tissue with TMEM106A antibody at 5 µg/mL.



TMEM106A Antibody 3

Immunofluorescence of TMEM106A in mouse brain tissue with TMEM106A antibody at 20 µg/mL.

Disclaimer

Disclaimer	Optimal dilutions/concentrations should be determined by the end user. The information provided is a guideline for product use. This product is for research use only.
------------	--

For research use only. For additional information, visit ProSci's [Terms and Conditions Page](#).