

## MLIP Antibody

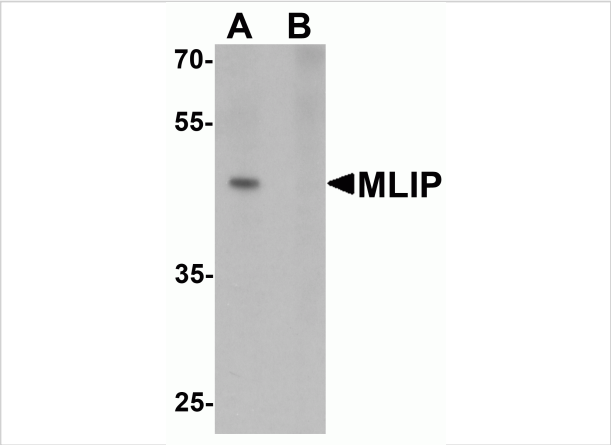
CATALOG NUMBER: 6719

### Specifications

Host Species	Rabbit
Species Reactivity	Human
Immunogen	MLIP antibody was raised against a 16 amino acid synthetic peptide near the carboxy terminus of human MLIP. The immunogen is located within the last 50 amino acids of MLIP.
Conjugate	Unconjugated
Tested Applications	ELISA, IF, IHC-P, WB
User Note	Optimal dilutions for each application to be determined by the researcher.
Specificity	At least three isoforms of MLIP are known to exist.

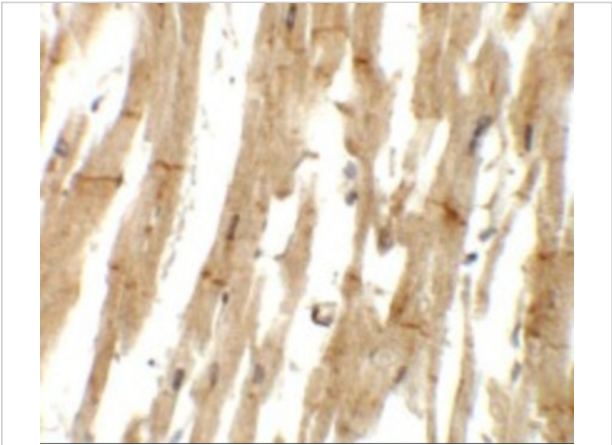
### Properties

Purification	MLIP Antibody is affinity chromatography purified via peptide column.
Clonality	Polyclonal
Isotype	IgG
Physical State	Liquid
Buffer	MLIP Antibody is supplied in PBS containing 0.02% sodium azide.
Concentration	1 mg/mL
Storage Conditions	MLIP antibody can be stored at 4°C for three months and -20°C, stable for up to one year. As with all antibodies care should be taken to avoid repeated freeze thaw cycles. Antibodies should not be exposed to prolonged high temperatures.



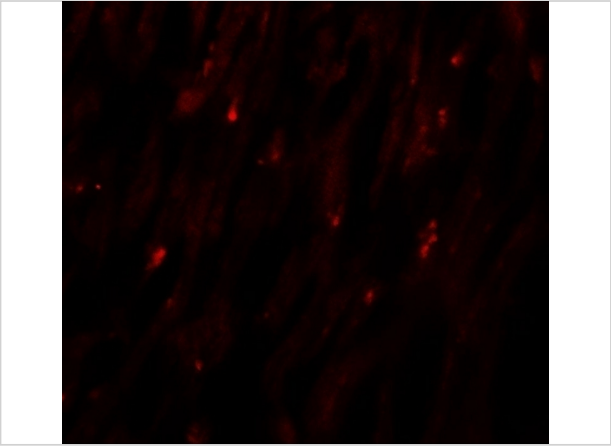
MLIP Antibody 1

Western blot analysis of MLIP in 293 cell lysate with MLIP antibody at 1 µg/mL in (A) the absence and (B) the presence of blocking peptide.



MLIP Antibody 2

Immunohistochemistry of MLIP in human heart tissue with MLIP antibody at 5 µg/mL.



MLIP Antibody 3

Immunofluorescence of MLIP in human heart tissue with MLIP antibody at 20 µg/mL.

Disclaimer

Disclaimer	Optimal dilutions/concentrations should be determined by the end user. The information provided is a guideline for product use. This product is for research use only.
------------	--

For research use only. For additional information, visit ProSci's [Terms and Conditions Page](#).