

## EPAC1 Antibody

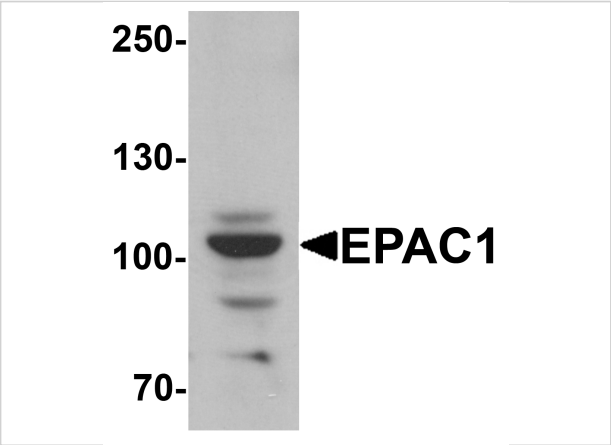
CATALOG NUMBER: 6631

### Specifications

Host Species	Rabbit
Species Reactivity	Human, Mouse, Rat
Immunogen	EPAC1 antibody was raised against an 18 amino acid synthetic peptide near the amino terminus of human EPAC1. The immunogen is located within amino acids 60 - 110 of EPAC1.
Conjugate	Unconjugated
Tested Applications	ELISA, IF, IHC-P, WB
User Note	Optimal dilutions for each application to be determined by the researcher.
Specificity	At least two isoforms of EPAC1 are known to exist; this antibody will detect both isoforms. EPAC1 antibody is predicted to not cross-react with EPAC2.

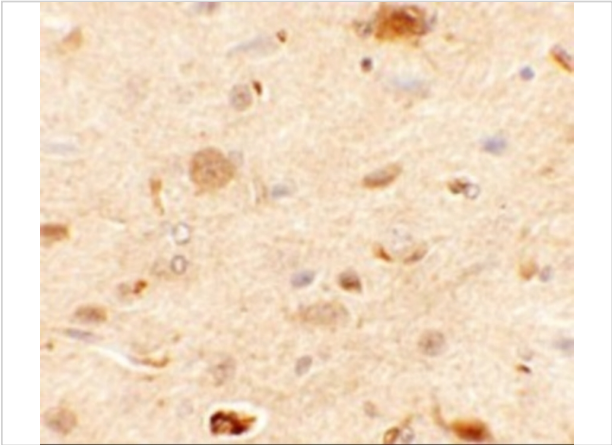
### Properties

Purification	EPAC1 Antibody is affinity chromatography purified via peptide column.
Clonality	Polyclonal
Isotype	IgG
Physical State	Liquid
Buffer	EPAC1 Antibody is supplied in PBS containing 0.02% sodium azide.
Concentration	1 mg/mL
Storage Conditions	EPAC1 antibody can be stored at 4°C for three months and -20°C, stable for up to one year. As with all antibodies care should be taken to avoid repeated freeze thaw cycles. Antibodies should not be exposed to prolonged high temperatures.



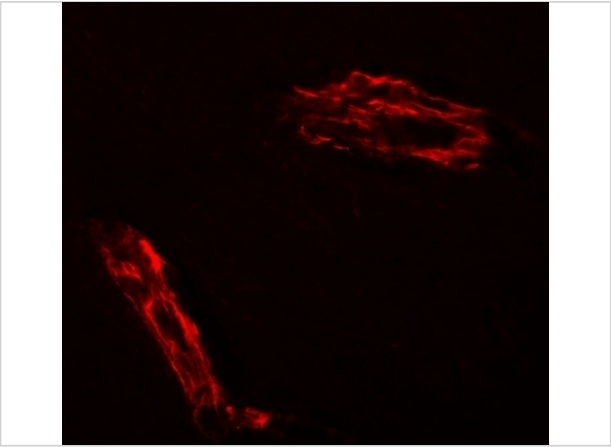
EPAC1 Antibody 1

Western blot analysis of EPAC1 in rat skeletal muscle tissue lysate with EPAC1 antibody at 1 µg/mL.



EPAC1 Antibody 2

Immunohistochemistry of EPAC1 in rat brain tissue with EPAC1 antibody at 2.5 µg/mL.



EPAC1 Antibody 3

Immunofluorescence of EPAC1 in rat brain tissue with EPAC1 antibody at 20 µg/mL.

Disclaimer

Disclaimer	Optimal dilutions/concentrations should be determined by the end user. The information provided is a guideline for product use. This product is for research use only.
------------	--

For research use only. For additional information, visit ProSci's [Terms and Conditions Page](#).