

CD33 Antibody

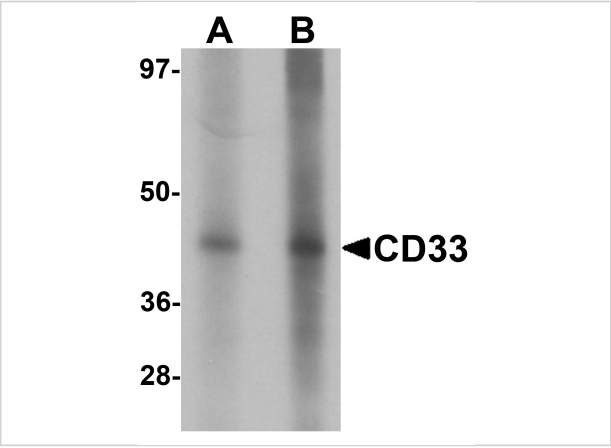
CATALOG NUMBER: 6595

Specifications

Host Species	Rabbit
Species Reactivity	Human, Mouse, Rat
Immunogen	CD33 antibody was raised against a 14 amino acid synthetic peptide near the center of human CD33. The immunogen is located within amino acids 180 - 230 of CD33.
Conjugate	Unconjugated
Tested Applications	ELISA, WB
User Note	Optimal dilutions for each application to be determined by the researcher.
Specificity	At least three isoforms of CD33 are known to exist; this antibody will detect all three isoforms.

Properties

Purification	CD33 Antibody is affinity chromatography purified via peptide column.
Clonality	Polyclonal
Isotype	IgG
Physical State	Liquid
Buffer	CD33 Antibody is supplied in PBS containing 0.02% sodium azide.
Concentration	1 mg/mL
Storage Conditions	CD33 antibody can be stored at 4°C for three months and -20°C, stable for up to one year. As with all antibodies care should be taken to avoid repeated freeze thaw cycles. Antibodies should not be exposed to prolonged high temperatures.



CD33 Antibody 1

Western blot analysis of CD33 in 3T3 cell lysate with CD33 antibody at (A) 1 and (B) 2 µg/mL.

Disclaimer

Disclaimer	Optimal dilutions/concentrations should be determined by the end user. The information provided is a guideline for product use. This product is for research use only.
------------	--

For research use only. For additional information, visit ProSci's [Terms and Conditions Page](#).