

PIWI-L2 Antibody

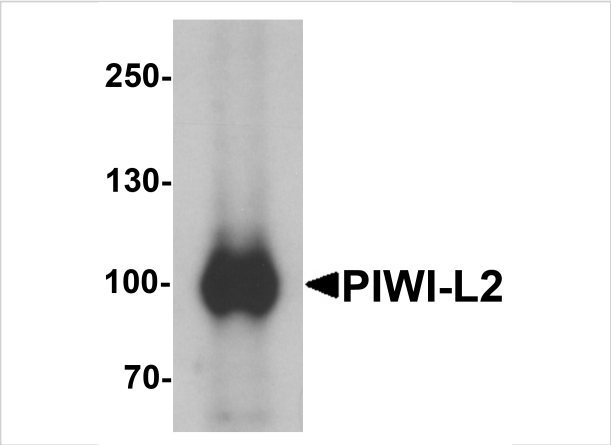
CATALOG NUMBER: 6569

Specifications

Host Species	Rabbit
Species Reactivity	Human, Mouse
Homology	Predicted species reactivity based on immunogen sequence: Rat: (87%), Chicken: (75%)
Immunogen	PIWI-L2 antibody was raised against a 17 amino acid synthetic peptide near the center of human PIWI-L2. The immunogen is located within amino acids 410 - 460 of PIWI-L2.
Conjugate	Unconjugated
Tested Applications	ELISA, ICC, IF, WB
User Note	Optimal dilutions for each application to be determined by the researcher.
Specificity	At least three isoforms of PIWI-L2 are known to exist; this antibody will only detect the two longest isoforms. PIWI-L2 antibody is predicted to not cross-react with other PIWI protein family members.

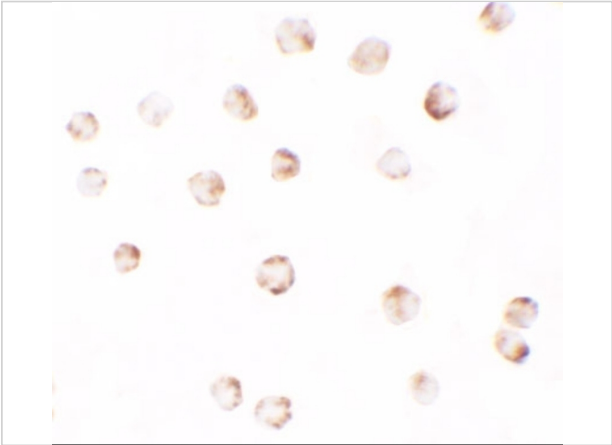
Properties

Purification	PIWI-L2 Antibody is affinity chromatography purified via peptide column.
Clonality	Polyclonal
Isotype	IgG
Physical State	Liquid
Buffer	PIWI-L2 Antibody is supplied in PBS containing 0.02% sodium azide.
Concentration	1 mg/mL
Storage Conditions	PIWI-L2 antibody can be stored at 4°C for three months and -20°C, stable for up to one year. As with all antibodies care should be taken to avoid repeated freeze thaw cycles. Antibodies should not be exposed to prolonged high temperatures.



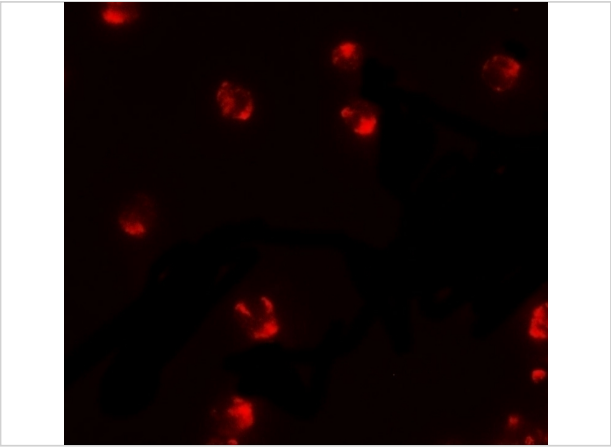
PIWI-L2 Antibody 1

Western blot analysis of PIWI-L2 in HepG2 cell lysate with PIWI-L1 antibody at 1 µg/mL.



PIWI-L2 Antibody 2

Immunocytochemistry of PIWI-L2 in HepG2 cells with PIWI-L2 antibody at 2.5 µg/mL.



PIWI-L2 Antibody 3

Immunofluorescence of PIWI-L2 in HepG2 cells with PIWI-L2 antibody at 5 µg/mL.

Disclaimer

Disclaimer	Optimal dilutions/concentrations should be determined by the end user. The information provided is a guideline for product use. This product is for research use only.
------------	--

For research use only. For additional information, visit ProSci's [Terms and Conditions Page](#).