

AFAP1 Antibody

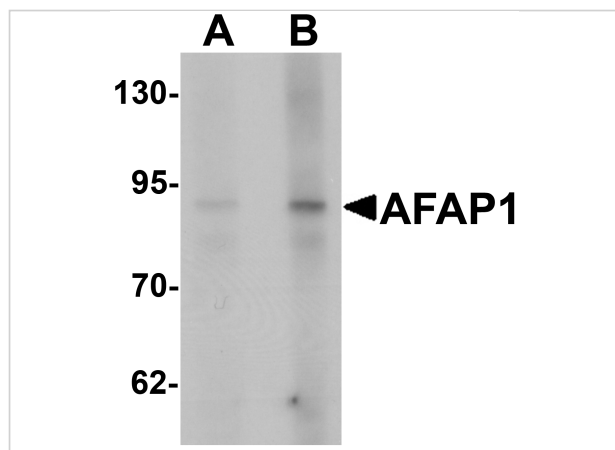
CATALOG NUMBER: 6557

Specifications

Host Species	Rabbit
Species Reactivity	Human, Mouse
Homology	Predicted species reactivity based on immunogen sequence: Rat: (78%)
Immunogen	AFAP1 antibody was raised against an 18 amino acid synthetic peptide near the amino terminus of human AFAP1. The immunogen is located within amino acids 30 - 80 of AFAP1.
Conjugate	Unconjugated
Tested Applications	ELISA, WB
User Note	Optimal dilutions for each application to be determined by the researcher.
Specificity	Monomer and homomultimer of AFAP1 are known to exist; AFAP1 antibody is predicted to not cross-react with other AFAP family members.

Properties

Purification	AFAP1 Antibody is affinity chromatography purified via peptide column.
Clonality	Polyclonal
Isotype	IgG
Physical State	Liquid
Buffer	AFAP1 Antibody is supplied in PBS containing 0.02% sodium azide.
Concentration	1 mg/mL
Storage Conditions	AFAP1 antibody can be stored at 4°C for three months and -20°C, stable for up to one year. As with all antibodies care should be taken to avoid repeated freeze thaw cycles. Antibodies should not be exposed to prolonged high temperatures.



AFAP1 Antibody 1

Western blot analysis of AFAP1 in HeLa cell lysate with AFAP1 antibody at (A) 1 and (B) 2 $\mu\text{g}/\text{mL}$.

Disclaimer

Disclaimer

Optimal dilutions/concentrations should be determined by the end user. The information provided is a guideline for product use. This product is for research use only.

For research use only. For additional information, visit ProSci's [Terms and Conditions Page](#).