

SPATA3 Antibody

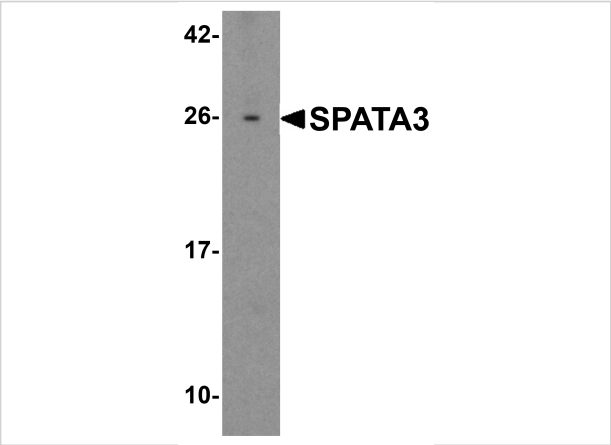
CATALOG NUMBER: 6551

Specifications

Host Species	Rabbit
Species Reactivity	Human, Mouse
Immunogen	SPATA3 antibody was raised against a 17 amino acid synthetic peptide near the carboxy terminus of human SPATA3. The immunogen is located within the last 50 amino acids of SPATA3.
Conjugate	Unconjugated
Tested Applications	ELISA, IF, IHC-P, WB
User Note	Optimal dilutions for each application to be determined by the researcher.
Specificity	At least three isoforms of SPATA3 are known to exist; this antibody will detect only the longest two isoforms. SPATA3 antibody is predicted to not cross-react with SPATA protein family members
Predicted Molecular Weight	Predicted: 21 kDa Observed: 26 kDa

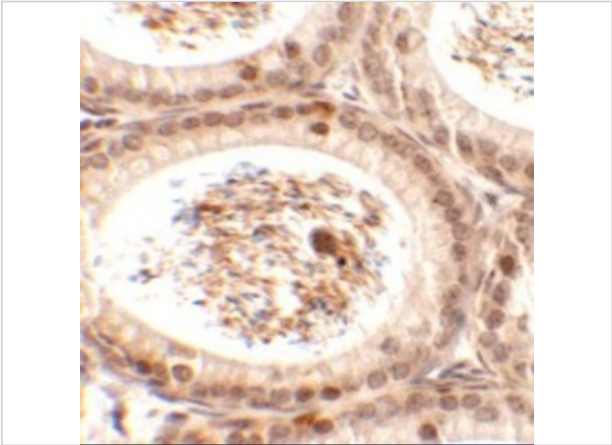
Properties

Purification	SPATA3 Antibody is affinity chromatography purified via peptide column.
Clonality	Polyclonal
Isotype	IgG
Physical State	Liquid
Buffer	SPATA3 Antibody is supplied in PBS containing 0.02% sodium azide.
Concentration	1 mg/mL
Storage Conditions	SPATA3 antibody can be stored at 4°C for three months and -20°C, stable for up to one year. As with all antibodies care should be taken to avoid repeated freeze thaw cycles. Antibodies should not be exposed to prolonged high temperatures.



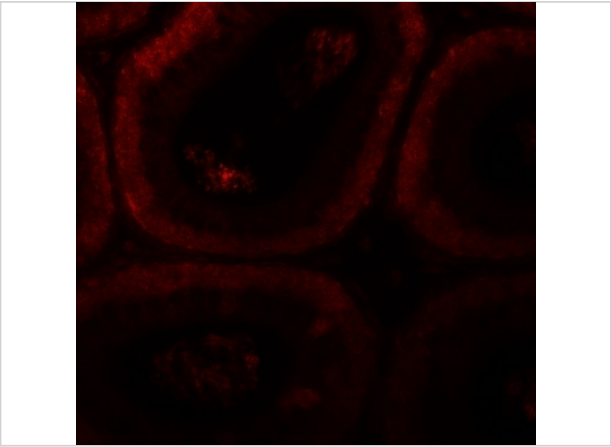
SPATA3 Antibody 1

Western blot analysis of SPATA3 in 3T3 cell lysate with SPATA3 antibody at 1 µg/mL.



SPATA3 Antibody 2

Immunohistochemistry of SPATA3 in mouse testis tissue with SPATA3 antibody at 2.5 µg/mL.



SPATA3 Antibody 3

Immunofluorescence of SPATA3 in mouse testis tissue with SPATA3 antibody at 20 µg/mL.

Disclaimer

Disclaimer	Optimal dilutions/concentrations should be determined by the end user. The information provided is a guideline for product use. This product is for research use only.
-------------------	--

For research use only. For additional information, visit ProSci's [Terms and Conditions Page](#).