



ProSci Incorporated
12170 Flint Place
Poway, CA 92064, USA
prosci-inc.com

P: +1 (888) 513-9525
Local: +1 (858) 513-2638
Fax: +1 (858) 513-2692

customercare@prosci-inc.com
techsupport@prosci-inc.com

Strumpellin Antibody

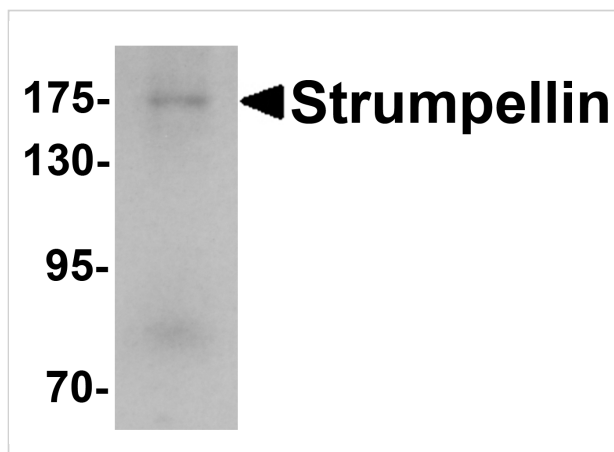
CATALOG NUMBER: 6497

Specifications

Host Species	Rabbit
Species Reactivity	Human, Mouse, Rat
Immunogen	Strumpellin antibody was raised against a 19 amino acid synthetic peptide near the carboxy terminus of human Strumpellin. The immunogen is located within the last 50 amino acids of Strumpellin.
Conjugate	Unconjugated
Tested Applications	ELISA, WB
User Note	Optimal dilutions for each application to be determined by the researcher.
Specificity	Multiple isoforms of Strumpellin are known to exist.

Properties

Purification	Strumpellin Antibody is affinity chromatography purified via peptide column.
Clonality	Polyclonal
Isotype	IgG
Physical State	Liquid
Buffer	Strumpellin Antibody is supplied in PBS containing 0.02% sodium azide.
Concentration	1 mg/mL
Storage Conditions	Strumpellin antibody can be stored at 4°C for three months and -20°C, stable for up to one year. As with all antibodies care should be taken to avoid repeated freeze thaw cycles. Antibodies should not be exposed to prolonged high temperatures.



Strumpellin Antibody 1

Western blot analysis of Strumpellin in human ovary tissue lysate with Strumpellin antibody at 1 µg/mL.

Disclaimer

Disclaimer

Optimal dilutions/concentrations should be determined by the end user. The information provided is a guideline for product use. This product is for research use only.

For research use only. For additional information, visit ProSci's [Terms and Conditions Page](#).