

HIG1 Antibody

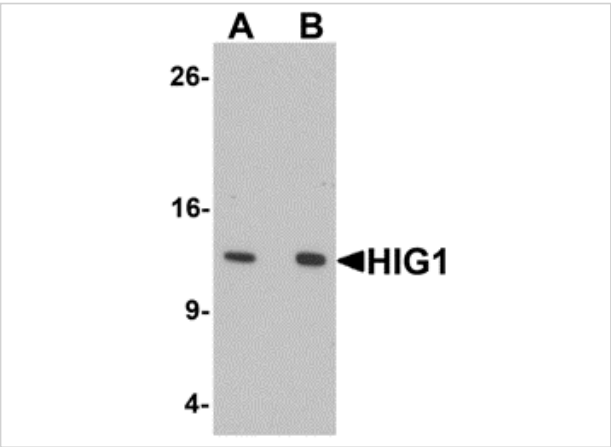
CATALOG NUMBER: 6489

Specifications

Host Species	Rabbit
Species Reactivity	Human
Homology	Predicted species reactivity based on immunogen sequence: Mouse: (79%), Rat: (74%)
Immunogen	HIG1 antibody was raised against a 19 amino acid synthetic peptide near the amino terminus of human HIG1. The immunogen is located within the first 50 amino acids of HIG1.
Conjugate	Unconjugated
Tested Applications	ELISA, ICC, IF, WB
User Note	Optimal dilutions for each application to be determined by the researcher.
Specificity	HIG1 antibody is predicted to not cross-react with HIG2

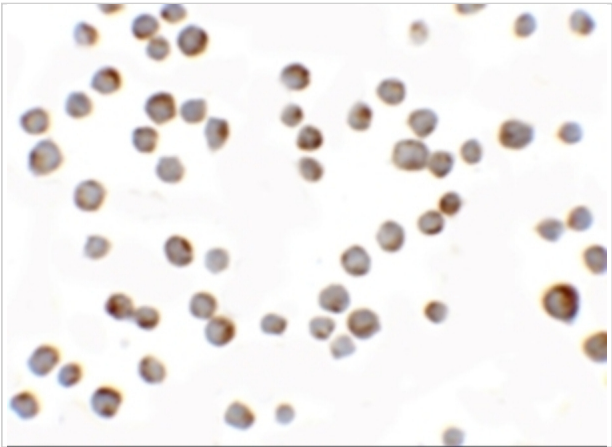
Properties

Purification	HIG1 Antibody is affinity chromatography purified via peptide column.
Clonality	Polyclonal
Isotype	IgG
Physical State	Liquid
Buffer	HIG1 Antibody is supplied in PBS containing 0.02% sodium azide.
Concentration	1 mg/mL
Storage Conditions	HIG1 antibody can be stored at 4°C for three months and -20°C, stable for up to one year. As with all antibodies care should be taken to avoid repeated freeze thaw cycles. Antibodies should not be exposed to prolonged high temperatures.



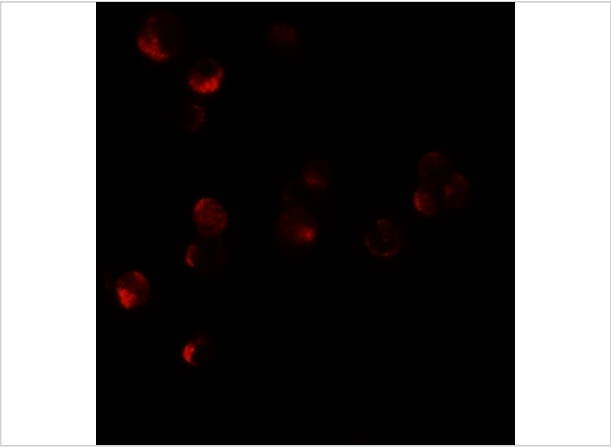
HIG1 Antibody 1

Western blot analysis of HIG1 in 293 cell lysate with HIG1 antibody at at (A) 0.5 and (B) 1 µg/mL.



HIG1 Antibody 2

Immunocytochemistry of HIG1 in 293 cells with HIG1 antibody at 2.5 µg/mL.



HIG1 Antibody 3

Immunofluorescence of HIG1 in 293 cells tissue with HIG1 antibody at 10 µg/mL.

Disclaimer

Disclaimer	Optimal dilutions/concentrations should be determined by the end user. The information provided is a guideline for product use. This product is for research use only.
------------	--

For research use only. For additional information, visit ProSci's [Terms and Conditions Page](#).