

SEC62 Antibody

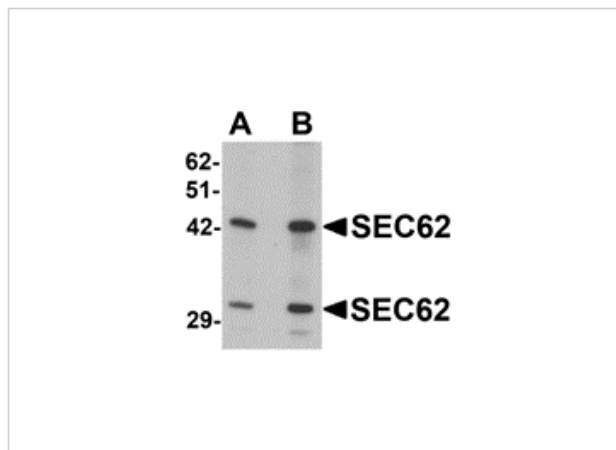
CATALOG NUMBER: 6471

Specifications

Host Species	Rabbit
Species Reactivity	Human, Mouse, Rat
Homology	Predicted species reactivity based on immunogen sequence: Chicken: (100%)
Immunogen	SEC62 antibody was raised against an 18 amino acid synthetic peptide near the carboxy terminus of human SEC62. The immunogen is located within amino acids 270 - 320 of SEC62.
Conjugate	Unconjugated
Tested Applications	ELISA, IF, IHC-P, WB
User Note	Optimal dilutions for each application to be determined by the researcher.
Specificity	SEC62 antibody is predicted to not cross-react with other SEC proteins. Multiple isoforms of SEC62 are known to exist.

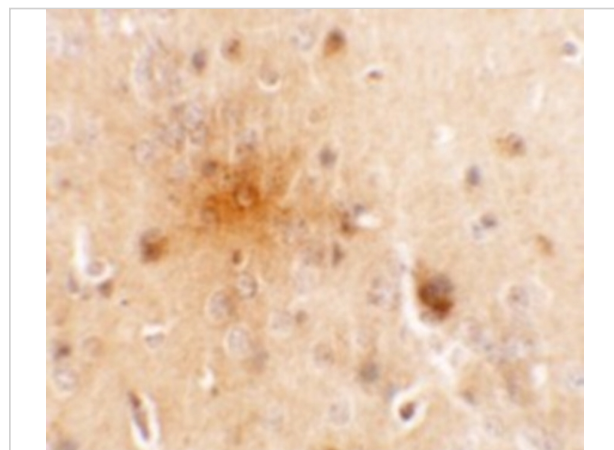
Properties

Purification	SEC62 Antibody is affinity chromatography purified via peptide column.
Clonality	Polyclonal
Isotype	IgG
Physical State	Liquid
Buffer	SEC62 Antibody is supplied in PBS containing 0.02% sodium azide.
Concentration	1 mg/mL
Storage Conditions	SEC62 antibody can be stored at 4°C for three months and -20°C, stable for up to one year. As with all antibodies care should be taken to avoid repeated freeze thaw cycles. Antibodies should not be exposed to prolonged high temperatures.



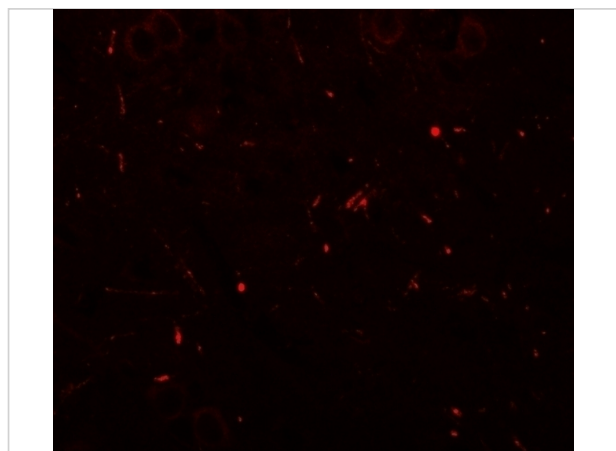
SEC62 Antibody 1

Western blot analysis of SEC62 in rat brain tissue lysate with SEC62 antibody at (A) 0.5 and (B) 1 $\mu\text{g/mL}$.



SEC62 Antibody 2

Immunohistochemistry of SEC62 in mouse brain tissue with SEC62 antibody at 5 $\mu\text{g/mL}$.



SEC62 Antibody 3

Immunofluorescence of SEC62 in mouse brain tissue with SEC62 antibody at 20 $\mu\text{g/mL}$.

Disclaimer

Disclaimer

Optimal dilutions/concentrations should be determined by the end user. The information provided is a guideline for product use. This product is for research use only.

For research use only. For additional information, visit ProSci's [Terms and Conditions Page](#).