



ProSci Incorporated
12170 Flint Place
Poway, CA 92064, USA
prosci-inc.com

P: +1 (888) 513-9525
Local: +1 (858) 513-2638
Fax: +1 (858) 513-2692

customercare@prosci-inc.com
techsupport@prosci-inc.com

UHRF1BP1 Antibody

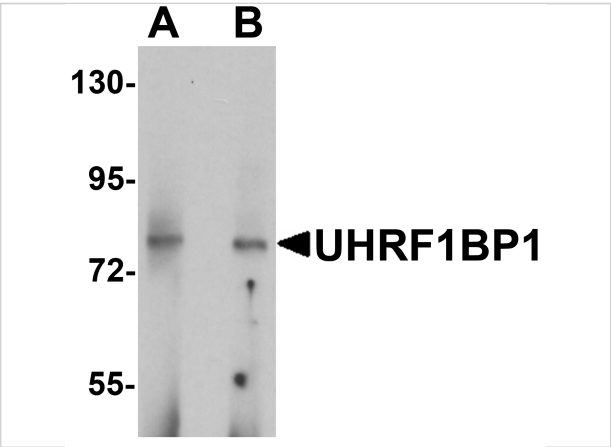
CATALOG NUMBER: 6459

Specifications

Host Species	Rabbit
Species Reactivity	Human, Mouse
Immunogen	UHRF1BP1 antibody was raised against a 17 amino acid synthetic peptide near the center of human UHRF1BP1. The immunogen is located within amino acids 890 - 940 of UHRF1BP1.
Conjugate	Unconjugated
Tested Applications	ELISA, IF, IHC-P, WB
User Note	Optimal dilutions for each application to be determined by the researcher.
Specificity	UHRF1BP1 antibody is predicted to not cross-react with UHRF1BP1L

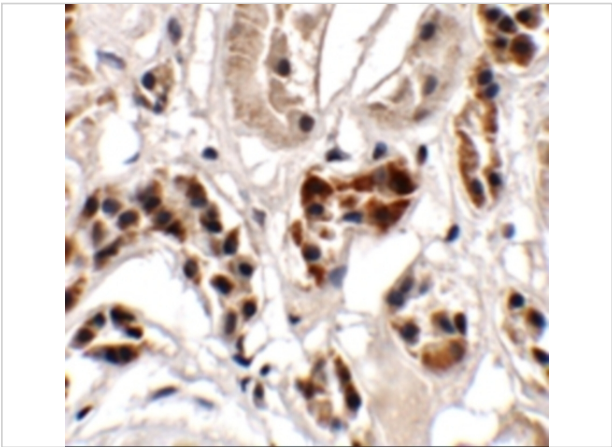
Properties

Purification	UHRF1BP1 Antibody is affinity chromatography purified via peptide column.
Clonality	Polyclonal
Isotype	IgG
Physical State	Liquid
Buffer	UHRF1BP1 Antibody is supplied in PBS containing 0.02% sodium azide.
Concentration	1 mg/mL
Storage Conditions	UHRF1BP1 antibody can be stored at 4°C for three months and -20°C, stable for up to one year. As with all antibodies care should be taken to avoid repeated freeze thaw cycles. Antibodies should not be exposed to prolonged high temperatures.



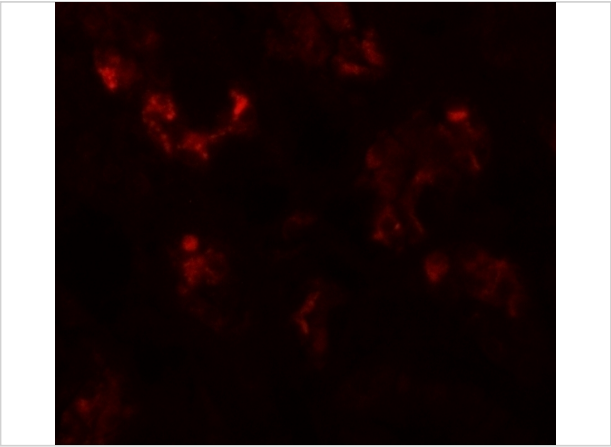
UHRF1BP1 Antibody 1

Western blot analysis of UHRF1BP1 in mouse kidney tissue lysate with UHRF1BP1 antibody at (A) 1 and (B) 2 µg/mL.



UHRF1BP1 Antibody 2

Immunohistochemistry of UHRF1BP1 in human kidney tissue with UHRF1BP1 antibody at 2.5 µg/mL.



UHRF1BP1 Antibody 3

Immunofluorescence of UHRF1BP1 in human kidney tissue with UHRF1BP1 antibody at 20 µg/mL.

Disclaimer

Disclaimer	Optimal dilutions/concentrations should be determined by the end user. The information provided is a guideline for product use. This product is for research use only.
------------	--

For research use only. For additional information, visit ProSci's [Terms and Conditions Page](#).