

AP3B2 Antibody

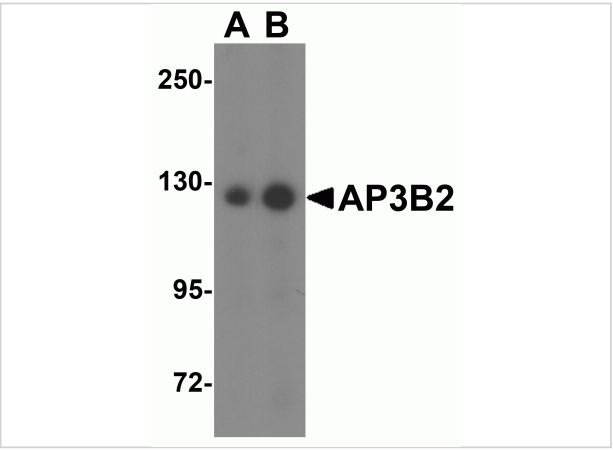
CATALOG NUMBER: 6395

Specifications

Host Species	Rabbit
Species Reactivity	Human, Mouse, Rat
Immunogen	AP3B2 antibody was raised against an 18 amino acid synthetic peptide near the amino terminus of human AP3B2. The immunogen is located within the first 50 amino acids of AP3B2.
Conjugate	Unconjugated
Tested Applications	ELISA, IF, IHC-P, WB
User Note	Optimal dilutions for each application to be determined by the researcher.
Predicted Molecular Weight	Predicted: 121 kDa Observed: 128 kDa

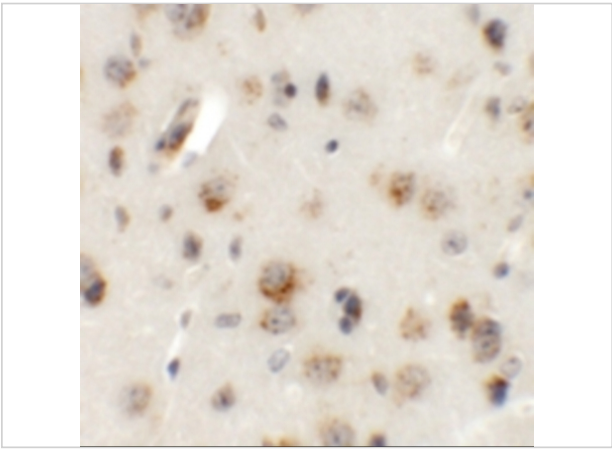
Properties

Purification	AP3B2 Antibody is affinity chromatography purified via peptide column.
Clonality	Polyclonal
Isotype	IgG
Physical State	Liquid
Buffer	AP3B2 Antibody is supplied in PBS containing 0.02% sodium azide.
Concentration	1 mg/mL
Storage Conditions	AP3B2 antibody can be stored at 4°C for three months and -20°C, stable for up to one year. As with all antibodies care should be taken to avoid repeated freeze thaw cycles. Antibodies should not be exposed to prolonged high temperatures.



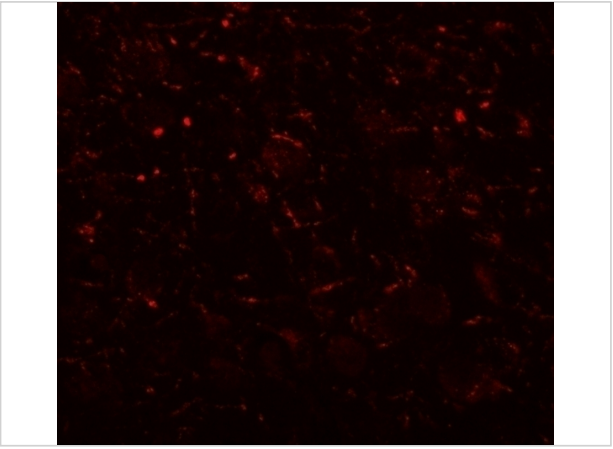
AP3B2 Antibody 1

Western blot analysis of AP3B2 in rat brain tissue lysate with AP3B2 antibody at (A) 1 and (B) 2 µg/mL.



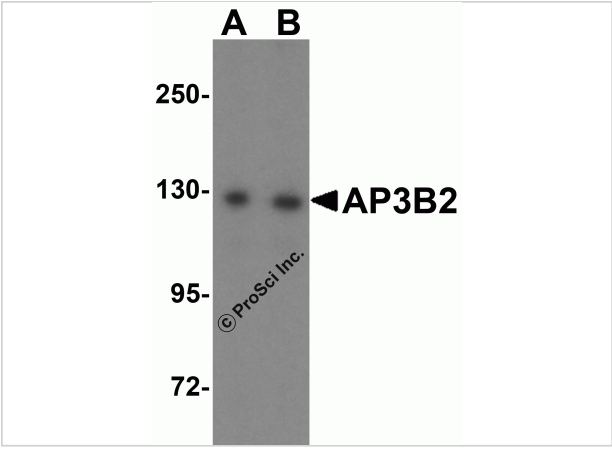
AP3B2 Antibody 2

Immunohistochemistry of AP3B2 in mouse brain tissue with AP3B2 antibody at 5 µg/mL.



AP3B2 Antibody 3

Immunofluorescence of AP3B2 in mouse brain tissue with AP3B2 antibody at 20 µg/mL.



AP3B2 Antibody 4

Western blot analysis of AP3B2 expression in mouse brain tissue lysate with AP3B2 antibody at (A) 1 and (B) 2 µg/mL.

Disclaimer

Disclaimer	Optimal dilutions/concentrations should be determined by the end user. The information provided is a guideline for product use. This product is for research use only.
------------	--

For research use only. For additional information, visit ProSci's [Terms and Conditions Page](#).