

Translin Antibody

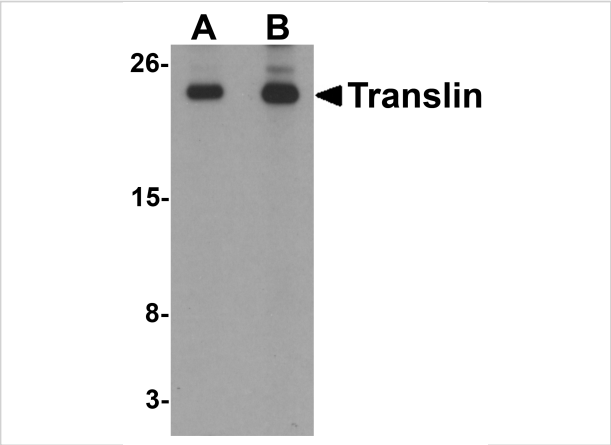
CATALOG NUMBER: 6369

Specifications

Host Species	Rabbit
Species Reactivity	Human, Mouse, Rat
Homology	Predicted species reactivity based on immunogen sequence: Bovine: (100%), Chicken: (100%)
Immunogen	Translin antibody was raised against a 20 amino acid synthetic peptide near the carboxy terminus of human Translin. The immunogen is located within the last 50 amino acids of Translin.
Conjugate	Unconjugated
Tested Applications	ELISA, IF, IHC-P, WB
User Note	Optimal dilutions for each application to be determined by the researcher.
Specificity	At least two isoforms of Translin are known to exist; this antibody will detect both.

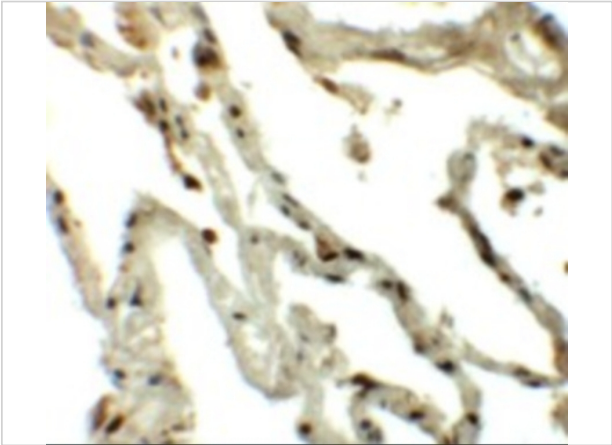
Properties

Purification	Translin Antibody is affinity chromatography purified via peptide column.
Clonality	Polyclonal
Isotype	IgG
Physical State	Liquid
Buffer	Translin Antibody is supplied in PBS containing 0.02% sodium azide.
Concentration	1 mg/mL
Storage Conditions	Translin antibody can be stored at 4 °C, stable for one year. As with all antibodies care should be taken to avoid repeated freeze thaw cycles. Antibodies should not be exposed to prolonged high temperatures.



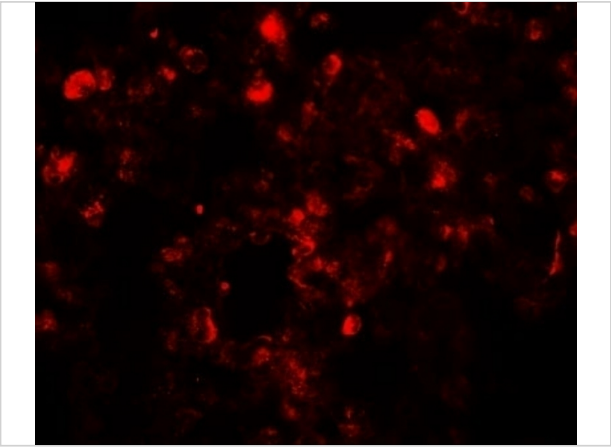
Translin Antibody 1

Western blot analysis of Translin in rat lung tissue lysate with Translin antibody at (A) 0.5 and (B) 1 $\mu\text{g/mL}$



Translin Antibody 2

Immunohistochemistry of Translin in human lung tissue with Translin antibody at 5 $\mu\text{g/mL}$.



Translin Antibody 3

Immunofluorescence of Translin in human lung tissue with Translin antibody at 20 $\mu\text{g/mL}$.

Disclaimer

Disclaimer	Optimal dilutions/concentrations should be determined by the end user. The information provided is a guideline for product use. This product is for research use only.
------------	--

For research use only. For additional information, visit ProSci's [Terms and Conditions Page](#).