

## SIK2 Antibody

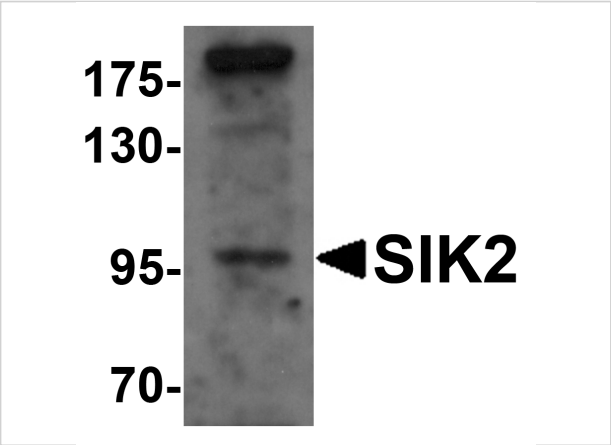
CATALOG NUMBER: 6301

### Specifications

Host Species	Rabbit
Species Reactivity	Human, Mouse, Rat
Immunogen	SIK2 antibody was raised against a 16 amino acid synthetic peptide near the center of human SIK2. The immunogen is located within amino acids 270 - 320 of SIK2.
Conjugate	Unconjugated
Tested Applications	ELISA, ICC, IF, WB
User Note	Optimal dilutions for each application to be determined by the researcher.
Specificity	SIK2 antibody is predicted to not cross-react with other SIK protein family members.

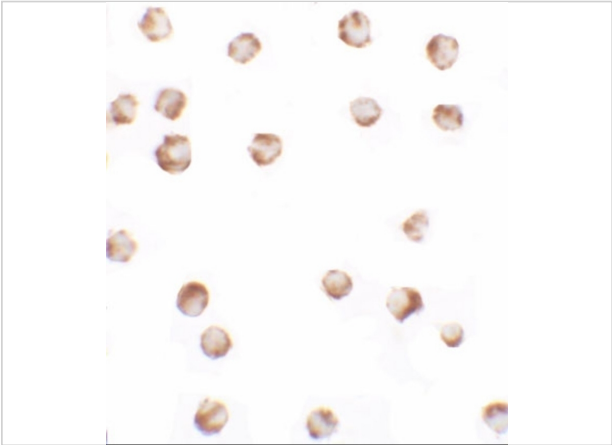
### Properties

Purification	SIK2 Antibody is affinity chromatography purified via peptide column.
Clonality	Polyclonal
Isotype	IgG
Physical State	Liquid
Buffer	SIK2 Antibody is supplied in PBS containing 0.02% sodium azide.
Concentration	1 mg/mL
Storage Conditions	SIK2 antibody can be stored at 4°C for three months and -20°C, stable for up to one year. As with all antibodies care should be taken to avoid repeated freeze thaw cycles. Antibodies should not be exposed to prolonged high temperatures.



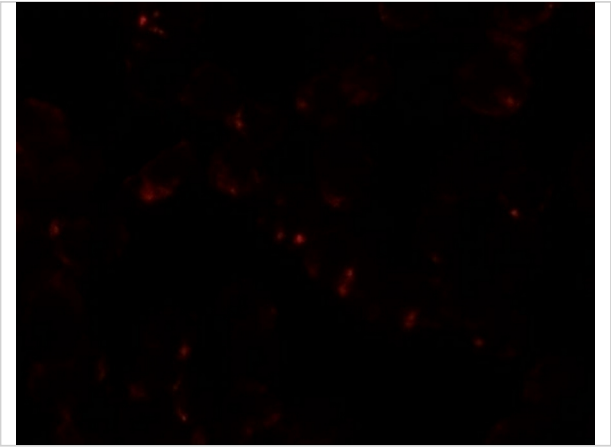
SIK2 Antibody 1

Western blot analysis of SIK2 in SW480 cell lysate with SIK2 antibody at 1 µg/mL.



SIK2 Antibody 2

Immunocytochemistry of SIK2 in SW480 cells with SIK2 antibody at 2.5 µg/mL.



SIK2 Antibody 3

Immunofluorescence of SIK2 in SW480 cells with SIK2 antibody at 5 µg/mL.

Disclaimer

Disclaimer	Optimal dilutions/concentrations should be determined by the end user. The information provided is a guideline for product use. This product is for research use only.
------------	--

For research use only. For additional information, visit ProSci's [Terms and Conditions Page](#).