

ATP2C2 Antibody

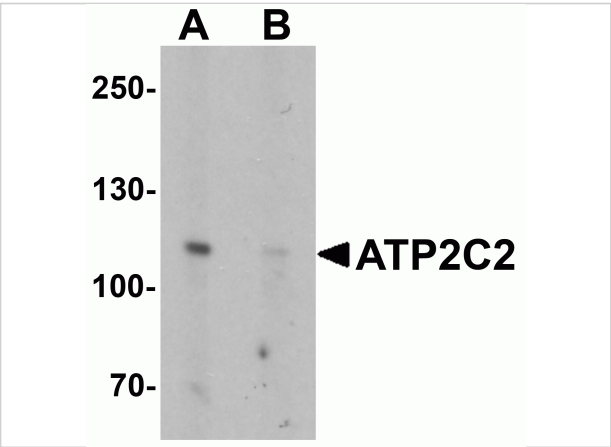
CATALOG NUMBER: 6289

Specifications

Host Species	Rabbit
Species Reactivity	Human, Mouse
Immunogen	ATP2C2 antibody was raised against a 19 amino acid synthetic peptide near the amino terminus of human ATP2C2. The immunogen is located within the first 50 amino acids of ATP2C2.
Conjugate	Unconjugated
Tested Applications	ELISA, IF, WB
User Note	Optimal dilutions for each application to be determined by the researcher.
Specificity	At least three isoforms of ATP2C2 are known to exist. ATP2C2 antibody will not cross-react with ATP2C1

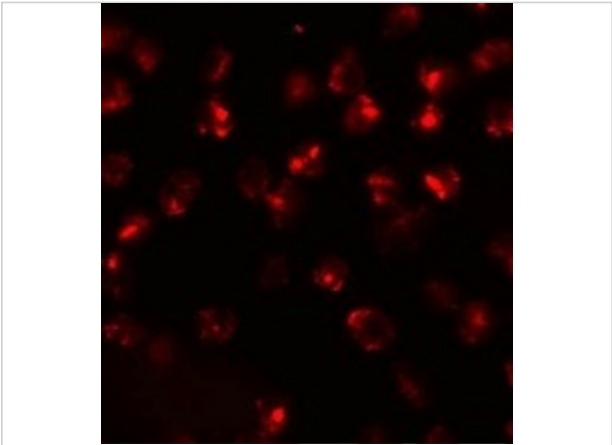
Properties

Purification	ATP2C2 Antibody is affinity chromatography purified via peptide column.
Clonality	Polyclonal
Isotype	IgG
Physical State	Liquid
Buffer	ATP2C2 Antibody is supplied in PBS containing 0.02% sodium azide.
Concentration	1 mg/mL
Storage Conditions	ATP2C2 antibody can be stored at 4°C for three months and -20°C, stable for up to one year. As with all antibodies care should be taken to avoid repeated freeze thaw cycles. Antibodies should not be exposed to prolonged high temperatures.



ATP2C2 Antibody 1

Western blot analysis of ATP2C2 in 3T3 cell lysate with ATP2C2 antibody at 1 µg/mL in (A) the absence and (B) the presence of blocking peptide.



ATP2C2 Antibody 2

Immunofluorescence of ATP2C2 in 3T3 cells with ATP2C2 antibody at 20 µg/mL.

Disclaimer

Disclaimer	Optimal dilutions/concentrations should be determined by the end user. The information provided is a guideline for product use. This product is for research use only.
------------	--

For research use only. For additional information, visit ProSci's [Terms and Conditions Page](#).