

## Precerebellin Antibody

CATALOG NUMBER: 3589

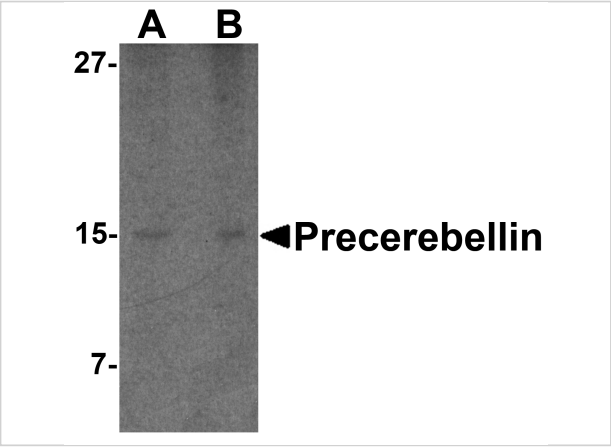
### Specifications

Host Species	Rabbit
Species Reactivity	Human, Mouse, Rat
Homology	Predicted species reactivity based on immunogen sequence: Bovine: (100%)
Immunogen	Precerebellin antibody was raised against a 15 amino acid synthetic peptide from the middle of human precerebellin. The immunogen is located within amino acids 50 - 100 of Precerebellin.
Conjugate	Unconjugated
Tested Applications	ELISA, IHC-P, WB
User Note	Optimal dilutions for each application to be determined by the researcher.

### Properties

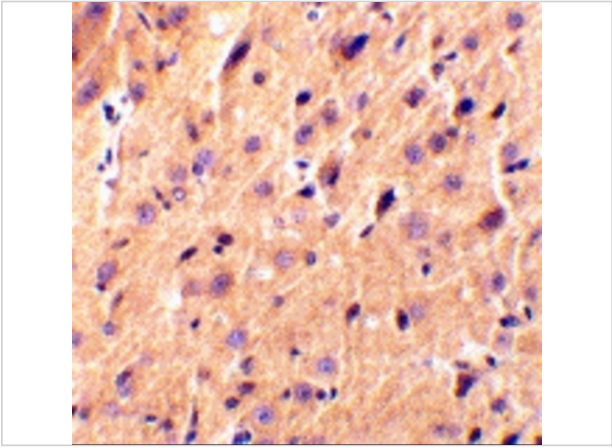
Purification	Precerebellin Antibody is affinity chromatography purified via peptide column.
Clonality	Polyclonal
Isotype	IgG
Physical State	Liquid
Buffer	Precerebellin Antibody is supplied in PBS containing 0.02% sodium azide.
Concentration	1 mg/mL
Storage Conditions	Precerebellin antibody can be stored at 4°C for three months and -20°C, stable for up to one year. As with all antibodies care should be taken to avoid repeated freeze thaw cycles. Antibodies should not be exposed to prolonged high temperatures.





Precerebellin Antibody 1

Western blot analysis of precerebellin in mouse cerebellum lysate with precerebellin antibody at (A) 2 and (B) 4 µg/mL.



Precerebellin Antibody 2

Immunohistochemical staining of rat brain tissue using precerebellin antibody at 2 µg/mL.

Disclaimer

Disclaimer	Optimal dilutions/concentrations should be determined by the end user. The information provided is a guideline for product use. This product is for research use only.
------------	--

For research use only. For additional information, visit ProSci's [Terms and Conditions Page](#).