

LRRTM3 Antibody

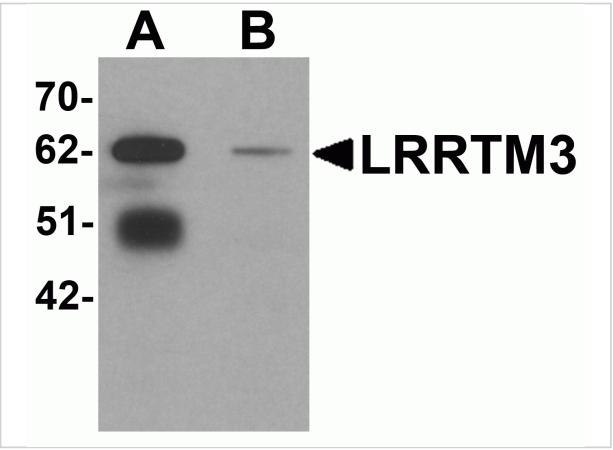
CATALOG NUMBER: 6171

Specifications

Host Species	Rabbit
Species Reactivity	Human, Mouse, Rat
Immunogen	LRRTM3 antibody was raised against a 18 amino acid synthetic peptide near the carboxy terminus of human LRRTM3. The immunogen is located within the last 50 amino acids of LRRTM3.
Conjugate	Unconjugated
Tested Applications	ELISA, IF, IHC-P, WB
User Note	Optimal dilutions for each application to be determined by the researcher.
Specificity	At least two isoforms of LRRTM3 are known to exist; this antibody will only detect the larger isoform.

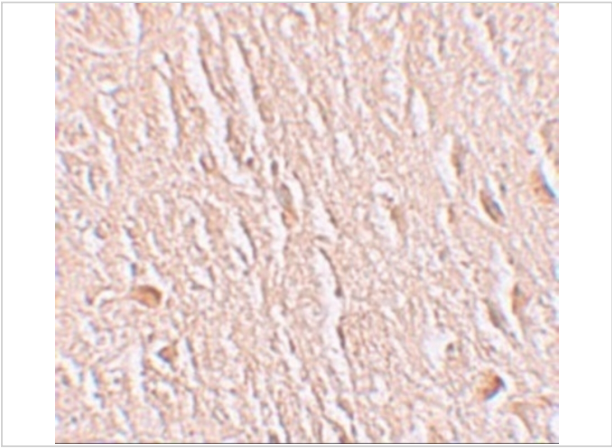
Properties

Purification	LRRTM3 Antibody is affinity chromatography purified via peptide column.
Clonality	Polyclonal
Isotype	IgG
Physical State	Liquid
Buffer	LRRTM3 Antibody is supplied in PBS containing 0.02% sodium azide.
Concentration	1 mg/mL
Storage Conditions	LRRTM3 antibody can be stored at 4°C for three months and -20°C, stable for up to one year. As with all antibodies care should be taken to avoid repeated freeze thaw cycles. Antibodies should not be exposed to prolonged high temperatures.



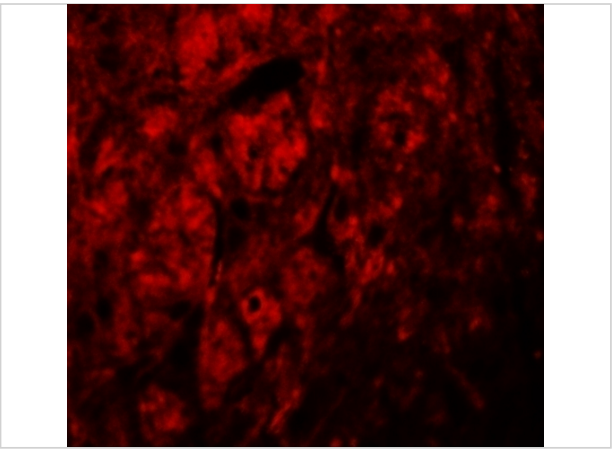
LRRTM3 Antibody 1

Western blot analysis of LRRTM3 in mouse brain tissue lysate with LRRTM3 antibody at 0.5 µg/mL in (A) the absence and (B) the presence of blocking peptide.



LRRTM3 Antibody 2

Immunohistochemistry of LRRTM3 in human brain tissue with LRRTM3 antibody at 2.5 µg/mL



LRRTM3 Antibody 3

Immunofluorescence of LRRTM3 in human brain tissue with LRRTM3 antibody at 20 µg/mL.

Disclaimer

Disclaimer	Optimal dilutions/concentrations should be determined by the end user. The information provided is a guideline for product use. This product is for research use only.
-------------------	--

For research use only. For additional information, visit ProSci's [Terms and Conditions Page](#).