

AXIN2 Antibody

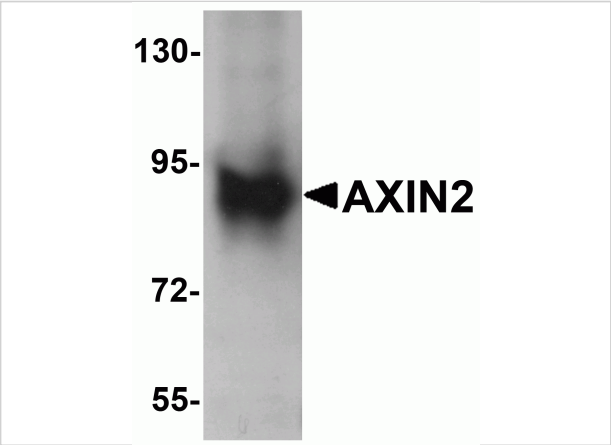
CATALOG NUMBER: 6163

Specifications

Host Species	Rabbit
Species Reactivity	Human, Mouse, Rat
Homology	Predicted species reactivity based on immunogen sequence: Chicken: (85%)
Immunogen	AXIN2 antibody was raised against a 20 amino acid synthetic peptide near the carboxy terminus of human AXIN2. The immunogen is located within amino acids 780 - 830 of AXIN2.
Conjugate	Unconjugated
Tested Applications	ELISA, IF, IHC-P, WB
User Note	Optimal dilutions for each application to be determined by the researcher.
Specificity	AXIN2 antibody is predicted to not cross-react with AXIN1. At least four isoforms of AXIN2 are known to exist; this antibody will recognize all four.
Predicted Molecular Weight	85, 93 kDa

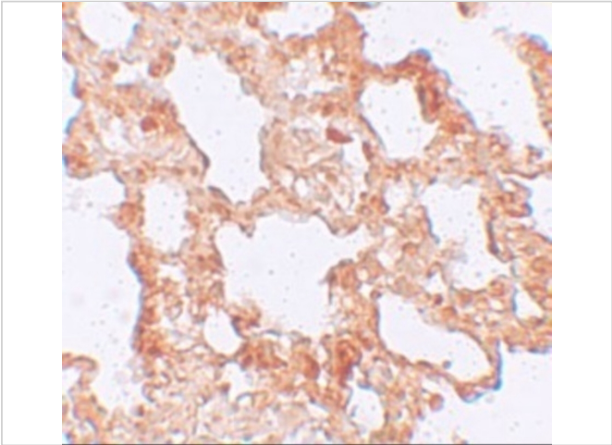
Properties

Purification	AXIN2 Antibody is affinity chromatography purified via peptide column.
Clonality	Polyclonal
Isotype	IgG
Physical State	Liquid
Buffer	AXIN2 Antibody is supplied in PBS containing 0.02% sodium azide.
Concentration	1 mg/mL
Storage Conditions	AXIN2 antibody can be stored at 4°C for three months and -20°C, stable for up to one year. As with all antibodies care should be taken to avoid repeated freeze thaw cycles. Antibodies should not be exposed to prolonged high temperatures.



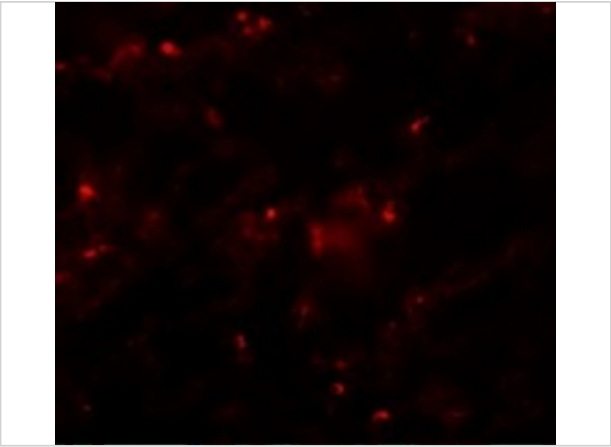
AXIN2 Antibody 1

Western blot analysis of AXIN2 in mouse lung lysate with AXIN2 antibody at 1 µg/mL.



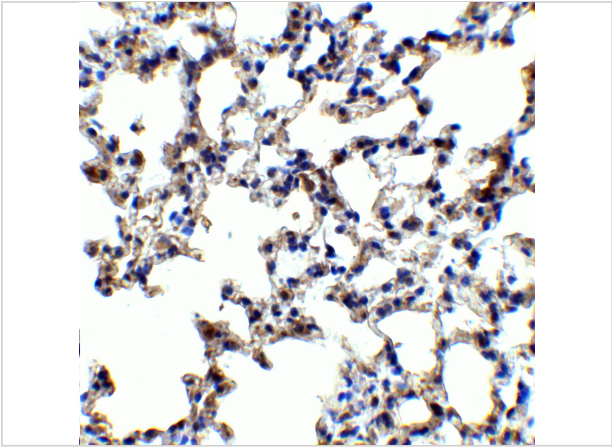
AXIN2 Antibody 2

Immunohistochemistry of AXIN2 in rat lung tissue with AXIN2 antibody at 5 µg/mL.



AXIN2 Antibody 3

Immunofluorescence of AXIN2 in Rat Lung cells with AXIN2 antibody at 20 µg/mL.



AXIN2 Antibody 4

Immunohistochemistry of AXIN2 in mouse lung tissue with AXIN2 antibody at 5 µg/mL.

Disclaimer

Disclaimer	Optimal dilutions/concentrations should be determined by the end user. The information provided is a guideline for product use. This product is for research use only.
------------	--

For research use only. For additional information, visit ProSci's [Terms and Conditions Page](#).