

PION Antibody

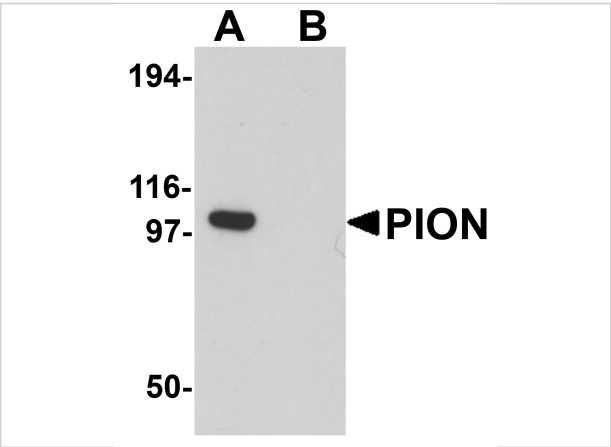
CATALOG NUMBER: 6161

Specifications

Host Species	Rabbit
Species Reactivity	Human, Mouse, Rat
Immunogen	PION antibody was raised against a 19 amino acid synthetic peptide near the carboxy terminus of human PION. The immunogen is located within amino acids 770 - 820 of PION.
Conjugate	Unconjugated
Tested Applications	ELISA, IF, IHC-P, WB
User Note	Optimal dilutions for each application to be determined by the researcher.
Specificity	Multiple isoforms of PION are known to exist. PION antibody is predicted to not cross-react with other F-box protein family members.

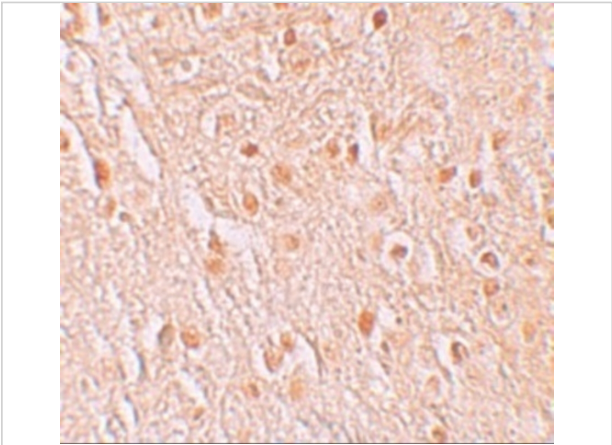
Properties

Purification	PION Antibody is affinity chromatography purified via peptide column.
Clonality	Polyclonal
Isotype	IgG
Physical State	Liquid
Buffer	PION Antibody is supplied in PBS containing 0.02% sodium azide.
Concentration	1 mg/mL
Storage Conditions	PION antibody can be stored at 4°C for three months and -20°C, stable for up to one year. As with all antibodies care should be taken to avoid repeated freeze thaw cycles. Antibodies should not be exposed to prolonged high temperatures.



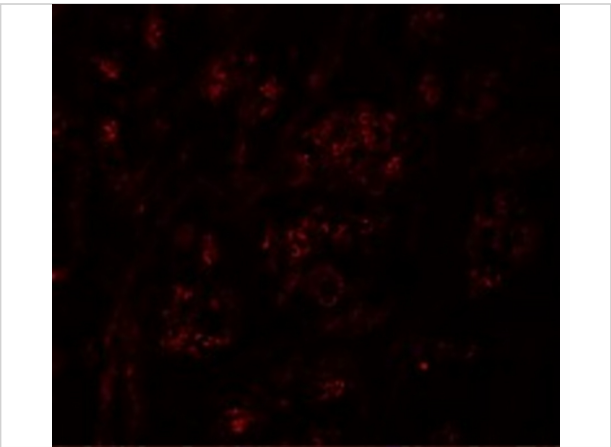
PION Antibody 1

Western blot analysis of PION in EL4 cell lysate with PION antibody at 0.25 µg/mL in (A) the absence and (B) the presence of blocking peptide.



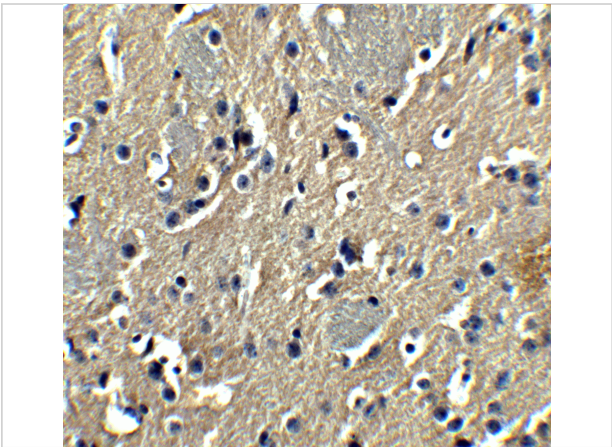
PION Antibody 2

Immunohistochemistry of PION in human brain tissue with PION antibody at 5 µg/mL.



PION Antibody 3

Immunofluorescence of PION in Human Brain cells with PION antibody at 20 µg/mL.



PION Antibody 4

Immunohistochemistry of PION in mouse brain tissue with PION antibody at 5 µg/mL.

Disclaimer

Disclaimer	Optimal dilutions/concentrations should be determined by the end user. The information provided is a guideline for product use. This product is for research use only.
------------	--

For research use only. For additional information, visit ProSci's [Terms and Conditions Page](#).