

ZIP14 Antibody

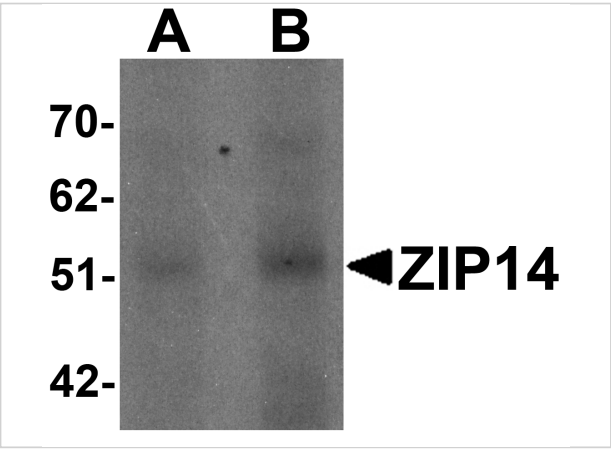
CATALOG NUMBER: 6105

Specifications

Host Species	Rabbit
Species Reactivity	Human, Mouse, Rat
Homology	Predicted species reactivity based on immunogen sequence: Bovine: (94%)
Immunogen	ZIP14 antibody was raised against a 16 amino acid synthetic peptide near the center of human ZIP14. The immunogen is located within amino acids 230 - 280 of ZIP14.
Conjugate	Unconjugated
Tested Applications	ELISA, IF, IHC-P, WB
User Note	Optimal dilutions for each application to be determined by the researcher.
Specificity	At least three isoforms of ZIP14 are known to exist; this antibody will detect both isoforms. ZIP14 antibody is predicted to not cross-react with other ZIP family members.
Predicted Molecular Weight	Predicted: 54 kDa Observed: 52 kDa

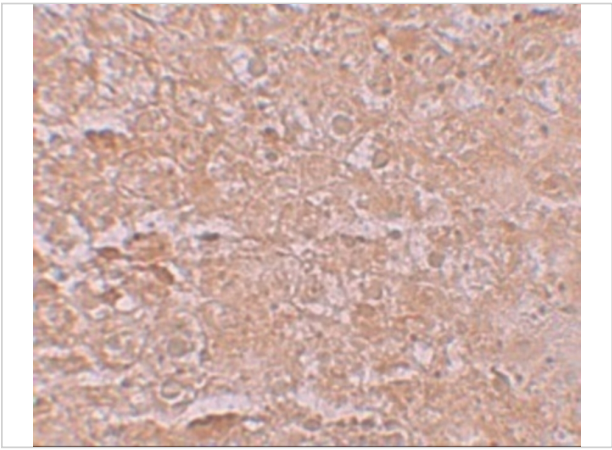
Properties

Purification	ZIP14 Antibody is affinity chromatography purified via peptide column.
Clonality	Polyclonal
Isotype	IgG
Physical State	Liquid
Buffer	ZIP14 Antibody is supplied in PBS containing 0.02% sodium azide.
Concentration	1 mg/mL
Storage Conditions	ZIP14 antibody can be stored at 4°C for three months and -20°C, stable for up to one year. As with all antibodies care should be taken to avoid repeated freeze thaw cycles. Antibodies should not be exposed to prolonged high temperatures.



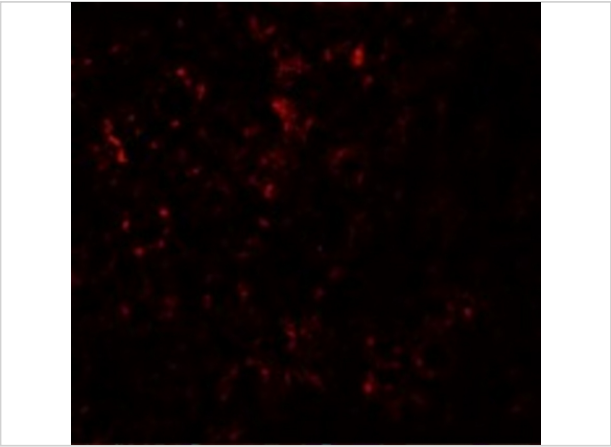
ZIP14 Antibody 1

Western blot analysis of ZIP14 in human spleen tissue lysate with ZIP14 antibody at (A) 1 and (B) 2 µg/mL.



ZIP14 Antibody 2

Immunohistochemistry of ZIP14 in mouse liver tissue with ZIP14 antibody at 2.5 µg/mL.



ZIP14 Antibody 3

Immunofluorescence of ZIP14 in Mouse Liver tissue with ZIP14 antibody at 20 µg/mL.

Disclaimer

Disclaimer	Optimal dilutions/concentrations should be determined by the end user. The information provided is a guideline for product use. This product is for research use only.
------------	--

For research use only. For additional information, visit ProSci's [Terms and Conditions Page](#).