

ZIP8 Antibody

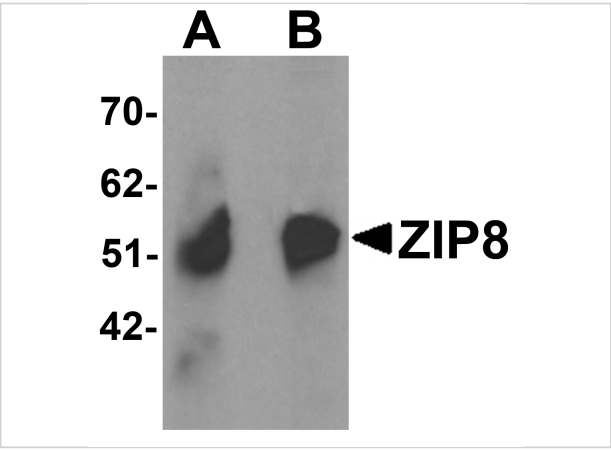
CATALOG NUMBER: 6095

Specifications

Host Species	Rabbit
Species Reactivity	Human
Homology	Predicted species reactivity based on immunogen sequence: Mouse: (89%), Rat: (89%)
Immunogen	ZIP8 antibody was raised against a 18 amino acid synthetic peptide near the carboxy terminus of human ZIP8. The immunogen is located within the last 50 amino acids of ZIP8.
Conjugate	Unconjugated
Tested Applications	ELISA, IF, IHC-P, WB
User Note	Optimal dilutions for each application to be determined by the researcher.
Specificity	ZIP8 antibody is predicted to not cross-react with other ZIP family members.

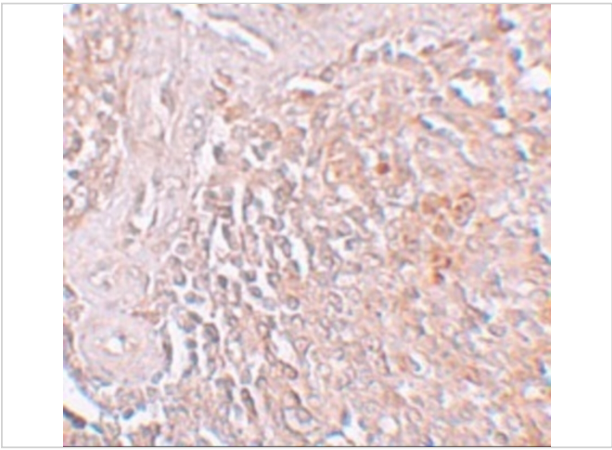
Properties

Purification	ZIP8 Antibody is affinity chromatography purified via peptide column.
Clonality	Polyclonal
Isotype	IgG
Physical State	Liquid
Buffer	ZIP8 Antibody is supplied in PBS containing 0.02% sodium azide.
Concentration	1 mg/mL
Storage Conditions	ZIP8 antibody can be stored at 4°C for three months and -20°C, stable for up to one year. As with all antibodies care should be taken to avoid repeated freeze thaw cycles. Antibodies should not be exposed to prolonged high temperatures.



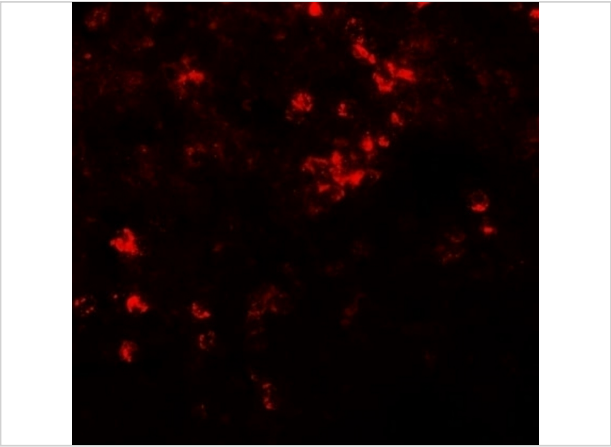
ZIP8 Antibody 1

Western blot analysis of ZIP8 in human spleen tissue lysate with ZIP8 antibody at (A) 1 and (B) 2 $\mu\text{g/mL}$.



ZIP8 Antibody 2

Immunohistochemistry of ZIP8 in human spleen tissue with ZIP8 antibody at 5 $\mu\text{g/mL}$.



ZIP8 Antibody 3

Immunofluorescence of ZIP8 in human spleen tissue with ZIP8 antibody at 20 $\mu\text{g/mL}$.

Disclaimer

Disclaimer	Optimal dilutions/concentrations should be determined by the end user. The information provided is a guideline for product use. This product is for research use only.
-------------------	--

For research use only. For additional information, visit ProSci's [Terms and Conditions Page](#).