

## CTRP3 Antibody

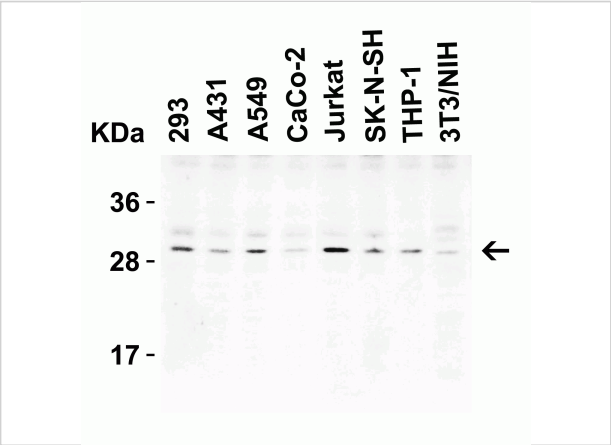
CATALOG NUMBER: 3565

### Specifications

Host Species	Rabbit
Species Reactivity	Human, Mouse, Rat
Immunogen	Anti-CTRP3 antibody ( <b>3565</b> ) was raised against a peptide corresponding to 16 amino acids near the center of human CTRP3. The immunogen is located within amino acids 90-140 of CTRP3.
Conjugate	Unconjugated
Tested Applications	ELISA, IF, IHC-P, WB
User Note	Optimal dilutions for each application to be determined by the researcher.
Specificity	Multiple isoforms of CTRP3 are known to exist. CTRP3 antibody is predicted to not recognize other members of the CTRP protein family.
Predicted Molecular Weight	Predicted: 27kD Observed: 30 kD (Post-modification: 1 N-linked glycosylation)

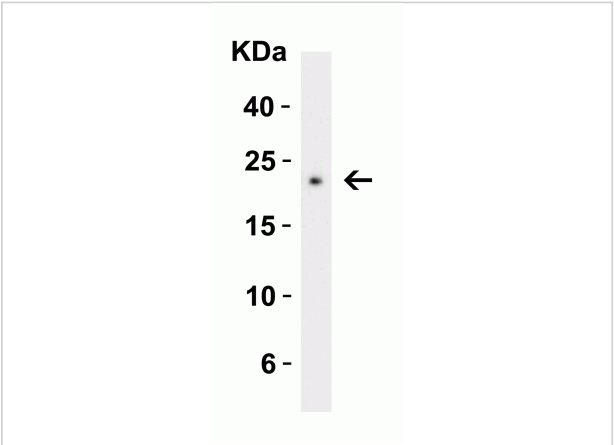
### Properties

Purification	CTRP3 Antibody is affinity chromatography purified via peptide column.
Clonality	Polyclonal
Isotype	IgG
Physical State	Liquid
Buffer	CTRP3 Antibody is supplied in PBS containing 0.02% sodium azide.
Concentration	1 mg/mL
Storage Conditions	CTRP3 antibody can be stored at 4°C for three months and -20°C, stable for up to one year. As with all antibodies care should be taken to avoid repeated freeze thaw cycles. Antibodies should not be exposed to prolonged high temperatures.



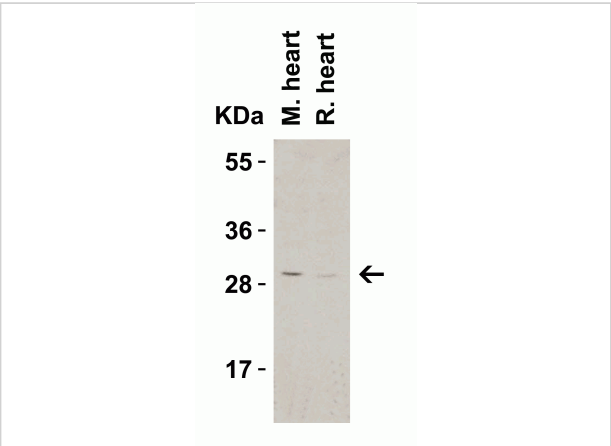
### CTRP3 Antibody 1

**Figure 1 Western Blot Validation in Human and Mouse Cell Lines**  
 Loading: 15 µg of lysates per lane. Antibodies: CTRP3, 3565 (1 µg/mL), 1h incubation at RT in 5% NFDM/TBST. Secondar...



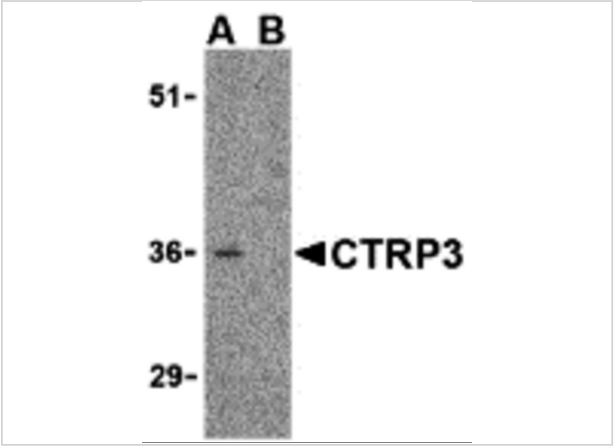
### CTRP3 Antibody 2

**Figure 2 Western Blot Validation with Recombinant Protein**  
 Loading: 30 ng of human CTRP3 recombinant protein per lane. Antibodies: CTRP3, 3565 (2 µg/mL), 1h incubation at RT in 5...



### CTRP3 Antibody 3

**Figure 3 Western Blot Validation in Mouse and Rat Tissue Lysates**  
 Loading: 15 µg of lysates per lane. Antibodies: CTRP3, 3565 (1 µg/mL), 1h incubation at RT in 5% NFDM/TBST. Secondar...



### CTRP3 Antibody 4

**Figure 4 Western Blot Validation in Mouse Heart Tissue Lysate**  
 in the (A) absence and (B) presence of blocking peptide  
 Loading: 15 µg of lysates per lane. Antibodies: CTRP3, 3565 ...

## Disclaimer

<b>Disclaimer</b>	Optimal dilutions/concentrations should be determined by the end user. The information provided is a guideline for product use. This product is for research use only.
-------------------	--

For research use only. For additional information, visit ProSci's [Terms and Conditions Page](#).