

MFSD2A Antibody

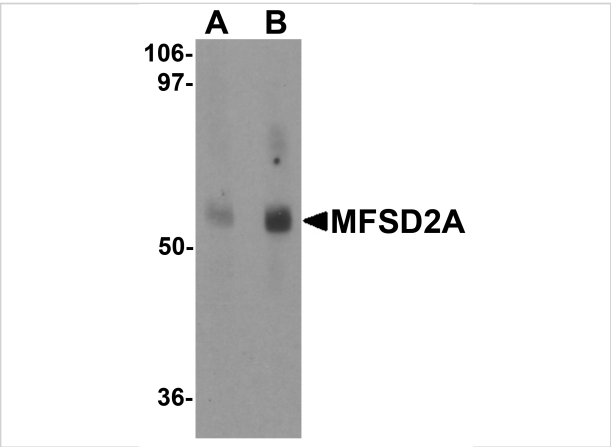
CATALOG NUMBER: 6025

Specifications

Host Species	Rabbit
Species Reactivity	Human, Mouse, Rat
Immunogen	MFSD2A antibody was raised against an 18 amino acid synthetic peptide near the carboxy terminus of human MFSD2A. The immunogen is located within the last 50 amino acids of MFSD2A.
Conjugate	Unconjugated
Tested Applications	ELISA, IF, IHC-P, WB
User Note	Optimal dilutions for each application to be determined by the researcher.

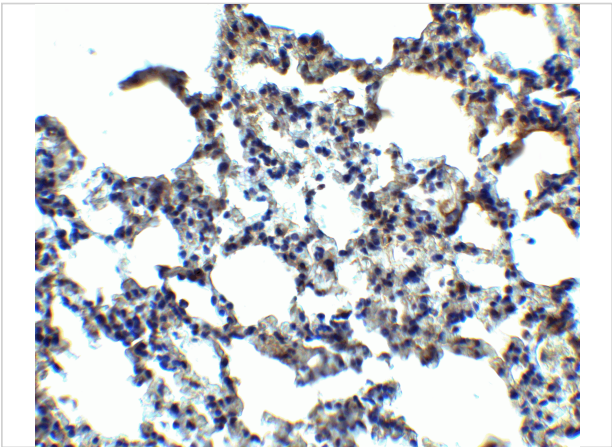
Properties

Purification	MFSD2A Antibody is affinity chromatography purified via peptide column.
Clonality	Polyclonal
Isotype	IgG
Physical State	Liquid
Buffer	MFSD2A Antibody is supplied in PBS containing 0.02% sodium azide.
Concentration	1 mg/mL
Storage Conditions	MFSD2A antibody can be stored at 4°C up to one year. Antibodies should not be exposed to prolonged high temperatures.



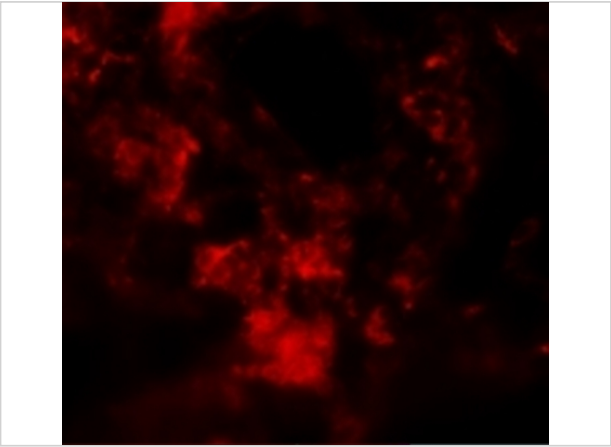
MFSD2A Antibody 1

Western blot analysis of MFSD2A in rat lung tissue lysate with MFSD2A antibody at (A) 1 and (B) 2 µg/mL.



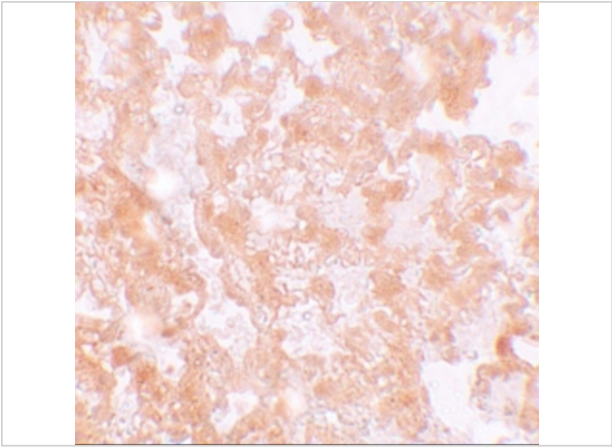
MFSD2A Antibody 2

Immunohistochemistry of MFSD2A in mouse lung tissue with MFSD2A antibody at 2.5 µg/ml.



MFSD2A Antibody 3

Immunofluorescence of MFSD2A in Rat Lung cells with MFSD2A antibody at 20 µg/mL.



MFSD2A Antibody 4

Immunohistochemistry of MFSD2A in rat lung tissue with MFSD2A antibody at 5 µg/mL.

Disclaimer

Disclaimer	Optimal dilutions/concentrations should be determined by the end user. The information provided is a guideline for product use. This product is for research use only.
------------	--

For research use only. For additional information, visit ProSci's [Terms and Conditions Page](#).