

KPNA1 Antibody

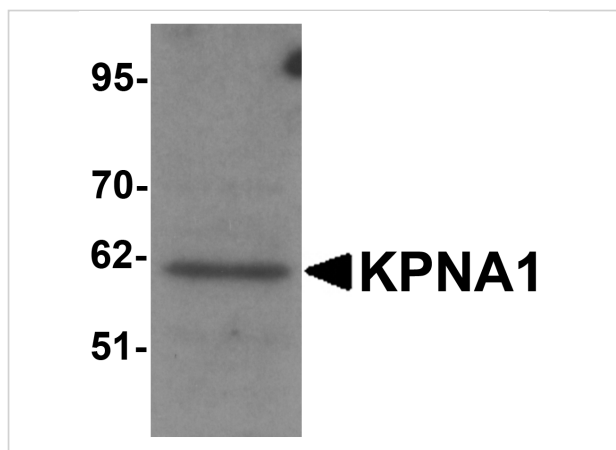
CATALOG NUMBER: 5981

Specifications

Host Species	Rabbit
Species Reactivity	Human, Mouse, Rat
Homology	Predicted species reactivity based on immunogen sequence: Bovine: (100%)
Immunogen	KPNA1 antibody was raised against a 15 amino acid synthetic peptide near the amino terminus of human KPNA1. The immunogen is located within amino acids 30 - 80 of KPNA1.
Conjugate	Unconjugated
Tested Applications	ELISA, ICC, IF, WB
User Note	Optimal dilutions for each application to be determined by the researcher.

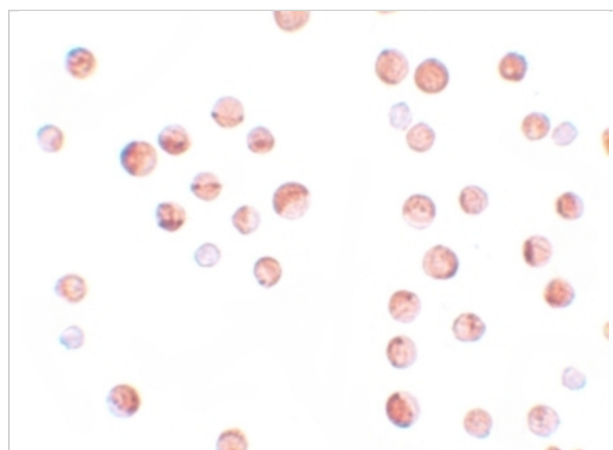
Properties

Purification	KPNA1 Antibody is affinity chromatography purified via peptide column.
Clonality	Polyclonal
Isotype	IgG
Physical State	Liquid
Buffer	KPNA1 Antibody is supplied in PBS containing 0.02% sodium azide.
Concentration	1 mg/mL
Storage Conditions	KPNA1 antibody can be stored at 4°C for three months and -20°C, stable for up to one year. As with all antibodies care should be taken to avoid repeated freeze thaw cycles. Antibodies should not be exposed to prolonged high temperatures.



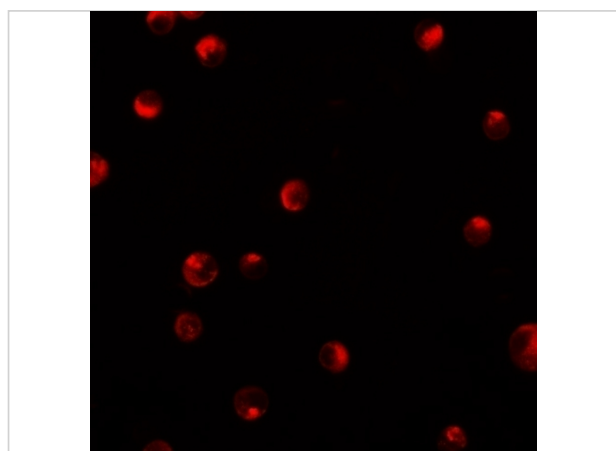
KPNA1 Antibody 1

Western blot analysis of KPNA1 in HeLa cell lysate with KPNA1 antibody at 1 µg/mL.



KPNA1 Antibody 2

Immunocytochemistry of KPNA1 in HeLa cells with KPNA1 antibody at 2.5 µg/mL.



KPNA1 Antibody 3

Immunofluorescence of KPNA1 in K562 cells with KPNA1 antibody at 20 µg/mL.

Disclaimer

Disclaimer

Optimal dilutions/concentrations should be determined by the end user. The information provided is a guideline for product use. This product is for research use only.

For research use only. For additional information, visit ProSci's [Terms and Conditions Page](#).