

## TRIM71 Antibody

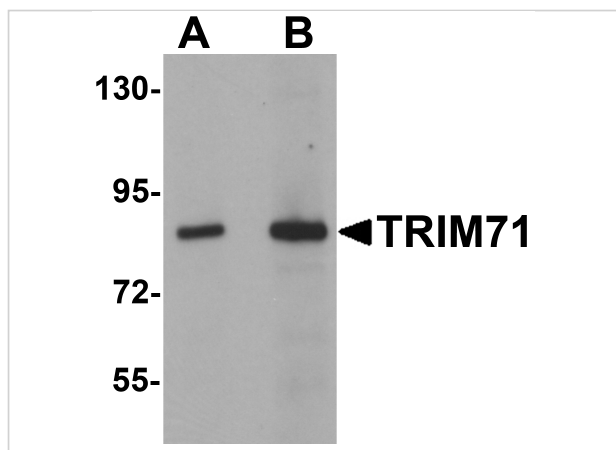
CATALOG NUMBER: 5881

### Specifications

Host Species	Rabbit
Species Reactivity	Human, Mouse, Rat
Homology	Predicted species reactivity based on immunogen sequence: Bovine: (100%), Chicken: (100%)
Immunogen	TRIM71 antibody was raised against a 15 amino acid synthetic peptide near the carboxy terminus of human TRIM71. The immunogen is located within amino acids 680 - 730 of TRIM71.
Conjugate	Unconjugated
Tested Applications	ELISA, IF, IHC-P, WB
User Note	Optimal dilutions for each application to be determined by the researcher.

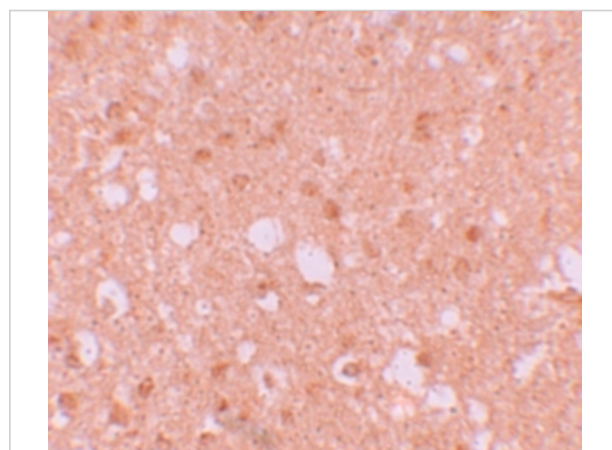
### Properties

Purification	TRIM71 Antibody is affinity chromatography purified via peptide column.
Clonality	Polyclonal
Isotype	IgG
Physical State	Liquid
Buffer	TRIM71 Antibody is supplied in PBS containing 0.02% sodium azide.
Concentration	1 mg/mL
Storage Conditions	TRIM71 antibody can be stored at 4°C for three months and -20°C, stable for up to one year. As with all antibodies care should be taken to avoid repeated freeze thaw cycles. Antibodies should not be exposed to prolonged high temperatures.



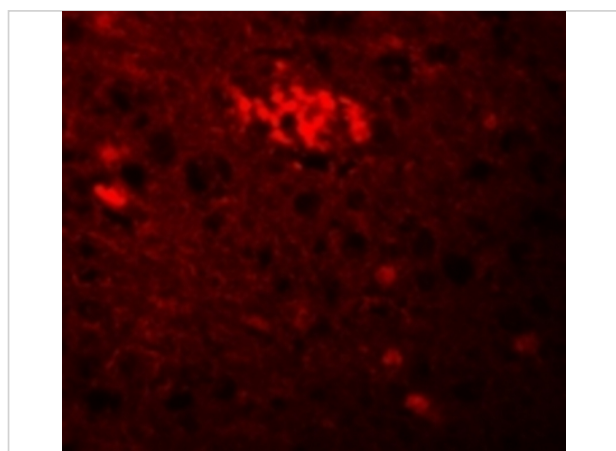
### TRIM71 Antibody 1

Western blot analysis of TRIM71 in human brain tissue lysate with TRIM71 antibody at (A) 1 and (B) 2  $\mu\text{g/mL}$ .



### TRIM71 Antibody 2

Immunohistochemistry of TRIM71 in human brain tissue with TRIM71 antibody at 5  $\mu\text{g/mL}$ .



### TRIM71 Antibody 3

Immunofluorescence of TRIM71 in Human Brain cells with TRIM71 antibody at 20  $\mu\text{g/mL}$ .

## Disclaimer

#### Disclaimer

Optimal dilutions/concentrations should be determined by the end user. The information provided is a guideline for product use. This product is for research use only.

For research use only. For additional information, visit ProSci's [Terms and Conditions Page](#).