

FOXO1 Antibody

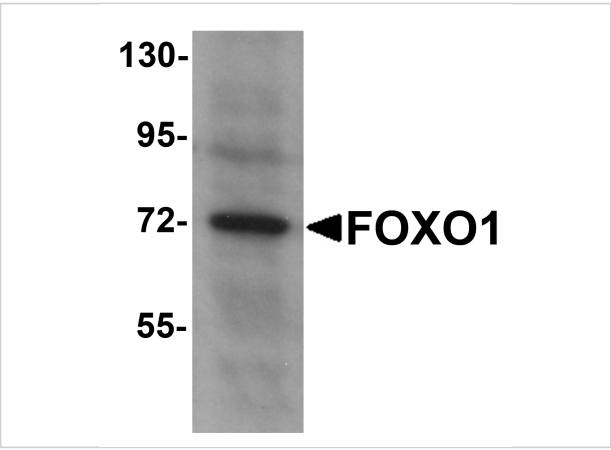
CATALOG NUMBER: 5811

Specifications

Host Species	Rabbit
Species Reactivity	Human, Mouse, Rat
Homology	Predicted species reactivity based on immunogen sequence: Bovine: (100%), Pig: (100%)
Immunogen	FOXO1 antibody was raised against a 15 amino acid synthetic peptide near the amino terminus of human FOXO1. The immunogen is located within the first 50 amino acids of FOXO1.
Conjugate	Unconjugated
Tested Applications	ELISA, ICC, IF, WB
User Note	Optimal dilutions for each application to be determined by the researcher.

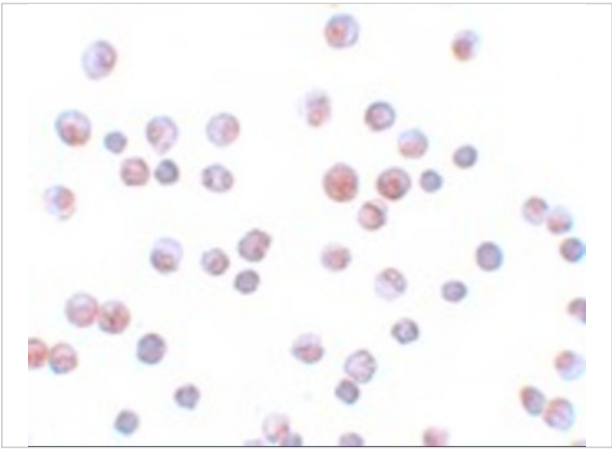
Properties

Purification	FOXO1 Antibody is affinity chromatography purified via peptide column.
Clonality	Polyclonal
Isotype	IgG
Physical State	Liquid
Buffer	FOXO1 Antibody is supplied in PBS containing 0.02% sodium azide.
Concentration	1 mg/mL
Storage Conditions	FOXO1 antibody can be stored at 4°C up to one year. Antibodies should not be exposed to prolonged high temperatures.



FOXO1 Antibody 1

Western blot analysis of FOXO1 in HeLa cell lysate with FOXO1 antibody at 1 µg/mL.



FOXO1 Antibody 2

Immunocytochemistry of FOXO1 in HeLa cells with FOXO1 antibody at 4 µg/mL.

Disclaimer

Disclaimer	Optimal dilutions/concentrations should be determined by the end user. The information provided is a guideline for product use. This product is for research use only.
------------	--

For research use only. For additional information, visit ProSci's [Terms and Conditions Page](#).