

## Mcl-1 Antibody

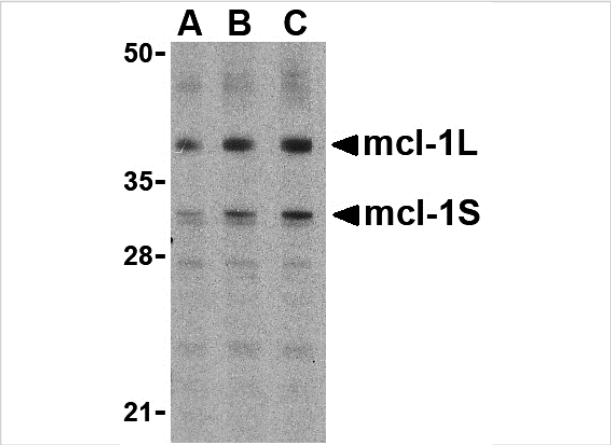
CATALOG NUMBER: 3481

### Specifications

Host Species	Rabbit
Species Reactivity	Human
Homology	Predicted species reactivity based on immunogen sequence: Mouse: (81%), Rat: (79%)
Immunogen	Mcl-1 antibody was raised against a peptide corresponding to 16 amino acids near the center of human Mcl-1. The immunogen is located within amino acids 110 - 160 of Mcl-1.
Conjugate	Unconjugated
Tested Applications	ELISA, ICC, WB
User Note	Optimal dilutions for each application to be determined by the researcher.
Specificity	Detects isoforms Mcl-1L and Mcl-1S

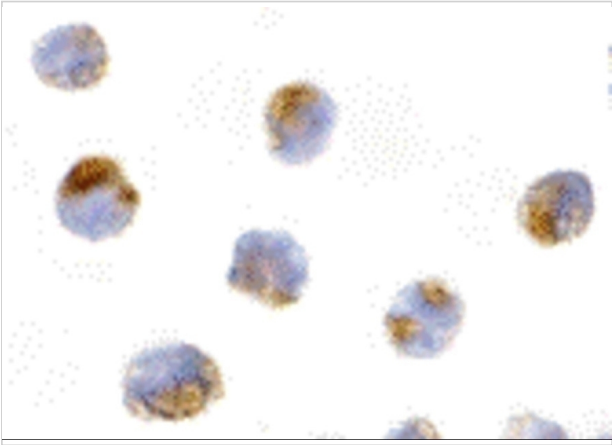
### Properties

Purification	Mcl-1 Antibody is Ion exchange chromatography purified.
Clonality	Polyclonal
Isotype	IgG
Physical State	Liquid
Buffer	Mcl-1 Antibody is supplied in PBS containing 0.02% sodium azide.
Concentration	1 mg/mL
Storage Conditions	Mcl-1 antibody can be stored at 4°C for three months and -20°C, stable for up to one year. As with all antibodies care should be taken to avoid repeated freeze thaw cycles. Antibodies should not be exposed to prolonged high temperatures.



Mcl-1 Antibody 1

Western blot analysis of Mcl-1 in Raji cell lysates with Mcl-1 antibody (IN) at (A) 0.5, (B) 1, and (C) 2 µg/mL.



Mcl-1 Antibody 2

Immunocytochemistry of Mcl-1 in Raji cells with Mcl-1 antibody at 10 µg/mL.

Disclaimer

Disclaimer	Optimal dilutions/concentrations should be determined by the end user. The information provided is a guideline for product use. This product is for research use only.
------------	--

For research use only. For additional information, visit ProSci's [Terms and Conditions Page](#).