

## Caspase-6 Antibody

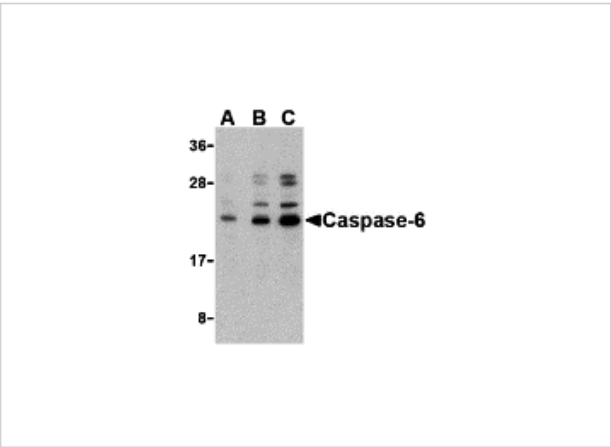
CATALOG NUMBER: 3471

### Specifications

Host Species	Rabbit
Species Reactivity	Human
Homology	Predicted species reactivity based on immunogen sequence: Bovine: (87%), Mouse: (87%), Rat: (86%)
Immunogen	Caspase-6 antibody was raised against a 15 amino acid synthetic peptide from near the amino-terminus of human Caspase-6. The immunogen is located within the first 50 amino acids of Caspase-6.
Conjugate	Unconjugated
Tested Applications	ELISA, ICC, WB
User Note	Optimal dilutions for each application to be determined by the researcher.
Specificity	Depending on cell lines or tissues used, either full-length or other cleavage products may be observed.

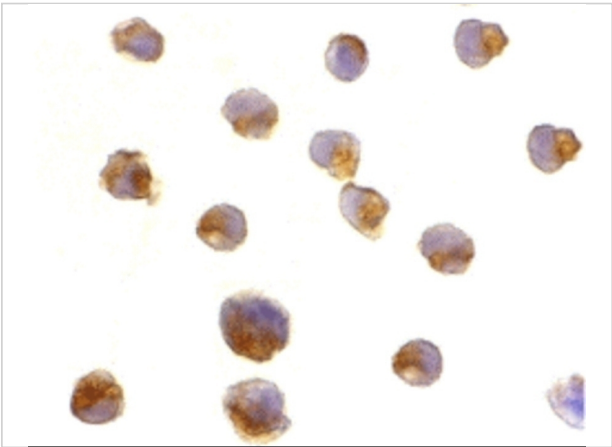
### Properties

Purification	Caspase-6 Antibody is affinity chromatography purified via peptide column.
Clonality	Polyclonal
Isotype	IgG
Physical State	Liquid
Buffer	Caspase-6 Antibody is supplied in PBS containing 0.02% sodium azide.
Concentration	1 mg/mL
Storage Conditions	Caspase-6 antibody can be stored at 4°C for three months and -20°C, stable for up to one year. As with all antibodies care should be taken to avoid repeated freeze thaw cycles. Antibodies should not be exposed to prolonged high temperatures.



Caspase-6 Antibody 1

Western blot analysis of caspase-6 in Jurkat cell lysate with caspase-6 antibody at (A) 0.5, (B) 1, and (C) 2 µg/mL.



Caspase-6 Antibody 2

Immunocytochemistry of caspase-6 in Jurkat cells with caspase-6 antibody at 2 µg/mL.

Disclaimer

Disclaimer	Optimal dilutions/concentrations should be determined by the end user. The information provided is a guideline for product use. This product is for research use only.
------------	--

For research use only. For additional information, visit ProSci's [Terms and Conditions Page](#).