



ProSci Incorporated
12170 Flint Place
Poway, CA 92064, USA
prosci-inc.com

P: +1 (888) 513-9525
Local: +1 (858) 513-2638
Fax: +1 (858) 513-2692

customercare@prosci-inc.com
techsupport@prosci-inc.com

TSPAN9 Antibody

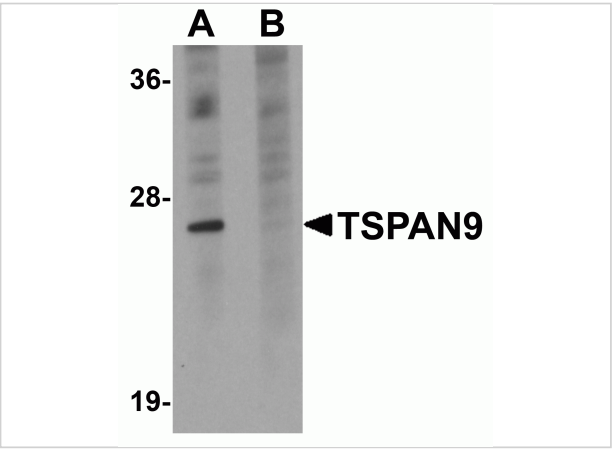
CATALOG NUMBER: 5559

Specifications

Host Species	Rabbit
Species Reactivity	Human, Mouse, Rat
Homology	Predicted species reactivity based on immunogen sequence: Sheep: (100%), Pig: (93%)
Immunogen	TSPAN9 antibody was raised against a 15 amino acid synthetic peptide from near the center of human TSPAN9. The immunogen is located within amino acids 90 - 140 of TSPAN9.
Conjugate	Unconjugated
Tested Applications	ELISA, IF, IHC-P, WB
User Note	Optimal dilutions for each application to be determined by the researcher.

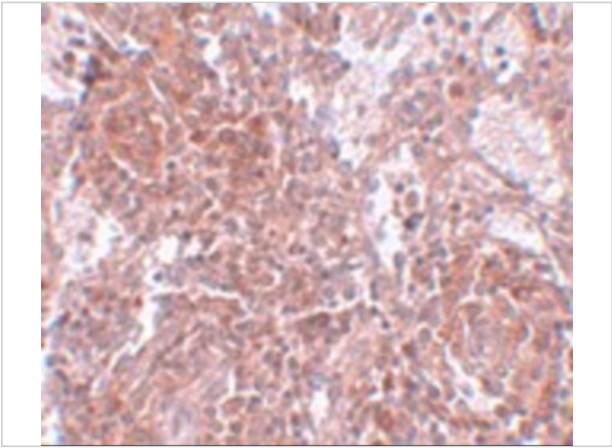
Properties

Purification	TSPAN9 Antibody is affinity chromatography purified via peptide column.
Clonality	Polyclonal
Isotype	IgG
Physical State	Liquid
Buffer	TSPAN9 Antibody is supplied in PBS containing 0.02% sodium azide.
Concentration	1 mg/mL
Storage Conditions	TSPAN9 antibody can be stored at 4°C for three months and -20°C, stable for up to one year. As with all antibodies care should be taken to avoid repeated freeze thaw cycles. Antibodies should not be exposed to prolonged high temperatures.



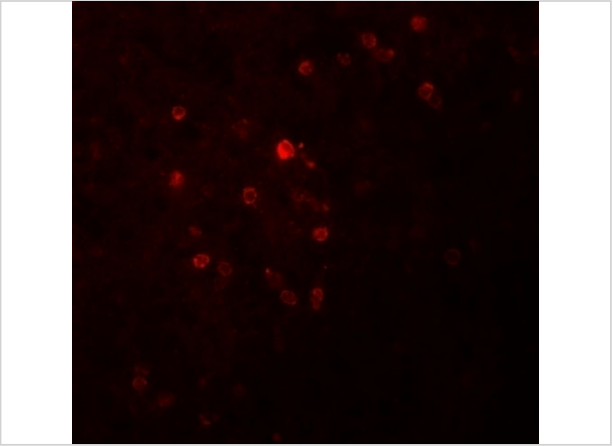
TSPAN9 Antibody 1

Western blot analysis of TSPAN9 in EL4 cell lysate with TSPAN9 antibody at 1 µg/mL in (A) the absence and (B) the presence of blocking peptide.



TSPAN9 Antibody 2

Immunohistochemistry of TSPAN9 in human spleen tissue with TSPAN9 antibody at 2.5 µg/mL.



TSPAN9 Antibody 3

Immunofluorescence of TSPAN9 in human spleen tissue with TSPAN9 antibody at 20 µg/mL.

Disclaimer

Disclaimer	Optimal dilutions/concentrations should be determined by the end user. The information provided is a guideline for product use. This product is for research use only.
------------	--

For research use only. For additional information, visit ProSci's [Terms and Conditions Page](#).