

## Caspase-5 Antibody

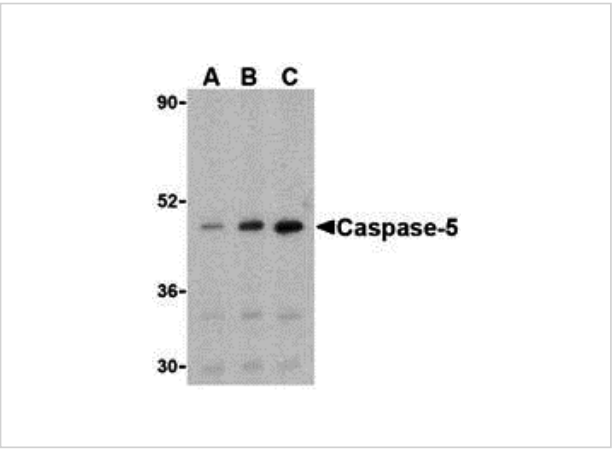
CATALOG NUMBER: 3457

### Specifications

Host Species	Rabbit
Species Reactivity	Human, Mouse
Homology	Predicted species reactivity based on immunogen sequence: Bovine: (79%)
Immunogen	Caspase-5 antibody was raised against a 14 amino acid synthetic peptide from the center of human Caspase-5. The immunogen is located within amino acids 170 - 220 of Caspase-5.
Conjugate	Unconjugated
Tested Applications	ELISA, ICC, IF, WB
User Note	Optimal dilutions for each application to be determined by the researcher.
Specificity	Depending on cell lines or tissues used, other cleavage products may be observed.

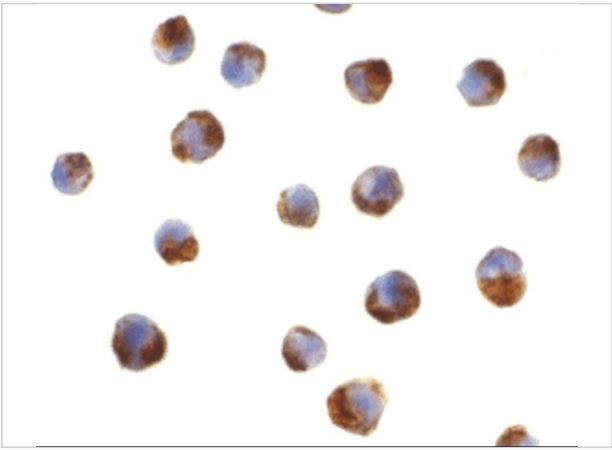
### Properties

Purification	Caspase-5 Antibody is affinity chromatography purified via peptide column.
Clonality	Polyclonal
Isotype	IgG
Physical State	Liquid
Buffer	Caspase-5 Antibody is supplied in PBS containing 0.02% sodium azide.
Concentration	1 mg/mL
Storage Conditions	Caspase-5 antibody can be stored at 4°C for three months and -20°C, stable for up to one year. As with all antibodies care should be taken to avoid repeated freeze thaw cycles. Antibodies should not be exposed to prolonged high temperatures.



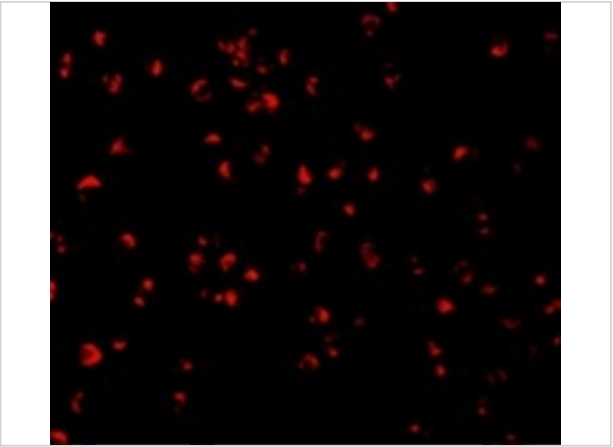
Caspase-5 Antibody 1

Western blot analysis of caspase-5 in Ramos cells with caspase-5 antibody at (A) 0.5, (B) 1, and (C) 2  $\mu\text{g/mL}$ .



Caspase-5 Antibody 2

Immunocytochemistry of caspase-5 in P815 cells with caspase-5 antibody at 2  $\mu\text{g/mL}$ .



Caspase-5 Antibody 3

Immunofluorescence of Caspase-5 in P815 cells with Caspase-5 antibody at 2  $\mu\text{g/mL}$ .

Disclaimer

Disclaimer	Optimal dilutions/concentrations should be determined by the end user. The information provided is a guideline for product use. This product is for research use only.
------------	--

For research use only. For additional information, visit ProSci's [Terms and Conditions Page](#).