



ProSci Incorporated  
12170 Flint Place  
Poway, CA 92064, USA  
prosci-inc.com

P: +1 (888) 513-9525  
Local: +1 (858) 513-2638  
Fax: +1 (858) 513-2692

customercare@prosci-inc.com  
techsupport@prosci-inc.com

## SQSTM1 Antibody

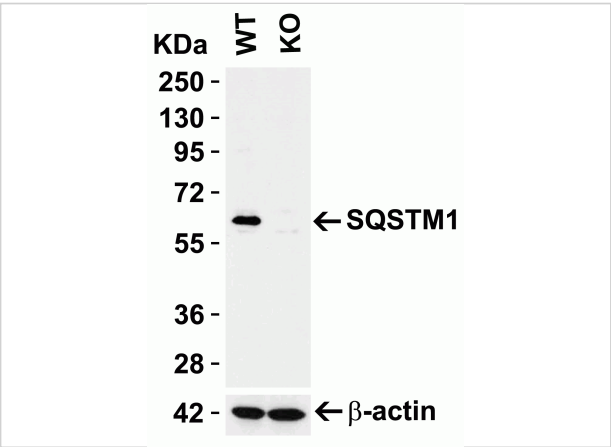
CATALOG NUMBER: 5449

### Specifications

Host Species	Rabbit
Species Reactivity	Human, Mouse, Rat
Immunogen	SQSTM1 antibody was raised against a 13 amino acid synthetic peptide from near the carboxy terminus of human SQSTM1. The immunogen is located within the last 50 amino acids of SQSTM1.
Conjugate	Unconjugated
Tested Applications	ELISA, IF, IHC-P, WB
User Note	Optimal dilutions for each application to be determined by the researcher.
Predicted Molecular Weight	Predicted: 48kD Observed: 65 kD

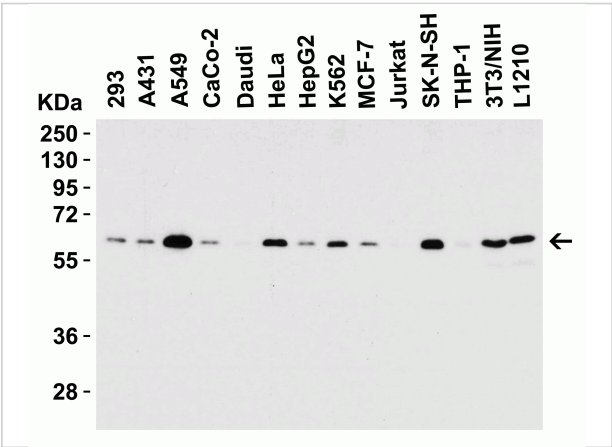
### Properties

Purification	SQSTM1 Antibody is affinity chromatography purified via peptide column.
Clonality	Polyclonal
Isotype	IgG
Physical State	Liquid
Buffer	SQSTM1 Antibody is supplied in PBS containing 0.02% sodium azide.
Concentration	1 mg/mL
Storage Conditions	SQSTM1 antibody can be stored at 4°C up to one year. Antibodies should not be exposed to prolonged high temperatures.



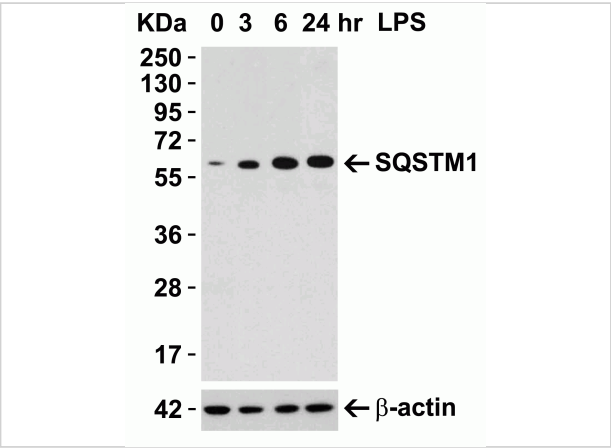
### SQSTM1 Antibody 1

**Figure 1 KO Validation in HEK293T Cells**  
 Loading: 10  $\mu$ g of HEK293T WT cell lysates or SQSTM1 KO cell lysates. Antibodies: SQSTM1 5449 (1  $\mu$ g/mL) and beta-actin 3779 (1  $\mu$ g/mL), 1h incubation at RT in 5% NFD...



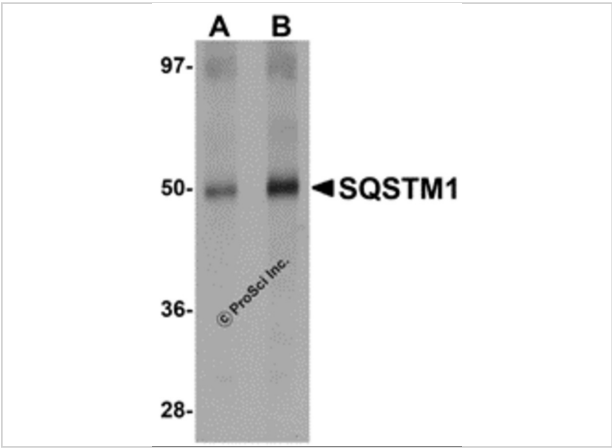
### SQSTM1 Antibody 2

**Figure 2 Western Blot Validation in Cell Lines**  
 Loading: 15  $\mu$ g of lysates per lane. Antibodies: SQSTM1 5449 (0.5  $\mu$ g/mL), 1h incubation at RT in 5% NFD... Secondary: Goat anti...



### SQSTM1 Antibody 3

**Figure 3 Induced Expression Validation in Mouse Macrophage Cells**  
 Loading: 15  $\mu$ g of lysates per lane. Antibodies: SQSTM1 5449 (0.5  $\mu$ g/mL), 1h incubation at RT in 5% NFD... Se...



### SQSTM1 Antibody 4

**Figure 4 Western Blot Validation in Human Spleen Tissue Lysate**  
 Loading: 15  $\mu$ g of lysates per lane. Antibodies: SQSTM1 5449 (A: 1  $\mu$ g/mL, B: 2  $\mu$ g/mL), 1h incubation at RT in 5% NFD...

## Disclaimer

<b>Disclaimer</b>	Optimal dilutions/concentrations should be determined by the end user. The information provided is a guideline for product use. This product is for research use only.
-------------------	--

For research use only. For additional information, visit ProSci's [Terms and Conditions Page](#).