

SCARB1 Antibody

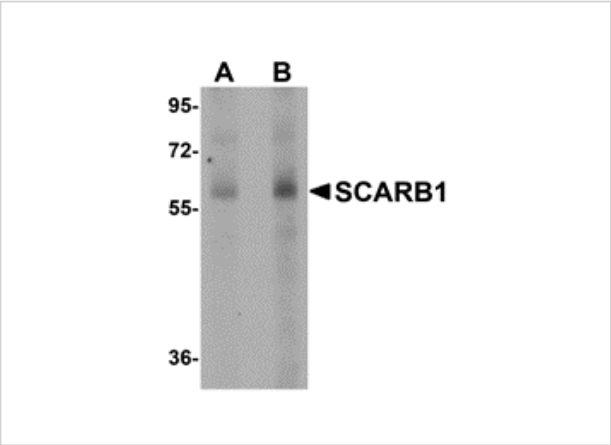
CATALOG NUMBER: 5193

Specifications

Host Species	Rabbit
Species Reactivity	Human, Mouse, Rat
Homology	Predicted species reactivity based on immunogen sequence: Pig: (93%), Bovine: (80%)
Immunogen	SCARB1 antibody was raised against a 15 amino acid synthetic peptide near the amino terminus of human SCARB1. The immunogen is located within amino acids 70 - 120 of SCARB1.
Conjugate	Unconjugated
Tested Applications	ELISA, IF, IHC-P, WB
User Note	Optimal dilutions for each application to be determined by the researcher.
Specificity	At least two isoforms of SCARB1 are known to exist; this antibody can detect both isoforms.
Predicted Molecular Weight	Predicted: 56, 60 kDa Observed: 60 kDa

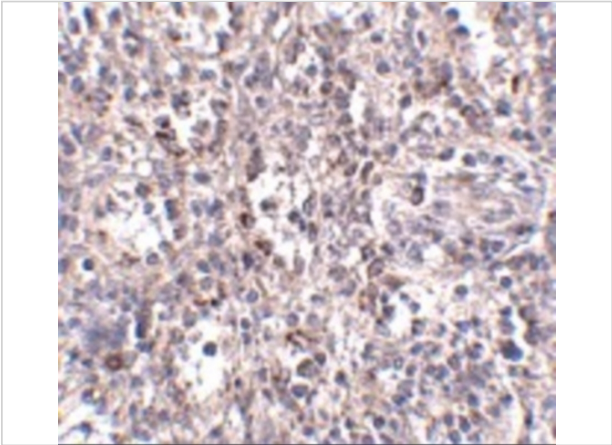
Properties

Purification	SCARB1 Antibody is affinity chromatography purified via peptide column.
Clonality	Polyclonal
Isotype	IgG
Physical State	Liquid
Buffer	SCARB1 Antibody is supplied in PBS containing 0.02% sodium azide.
Concentration	1 mg/mL
Storage Conditions	SCARB1 antibody can be stored at 4°C for three months and -20°C, stable for up to one year. As with all antibodies care should be taken to avoid repeated freeze thaw cycles. Antibodies should not be exposed to prolonged high temperatures.



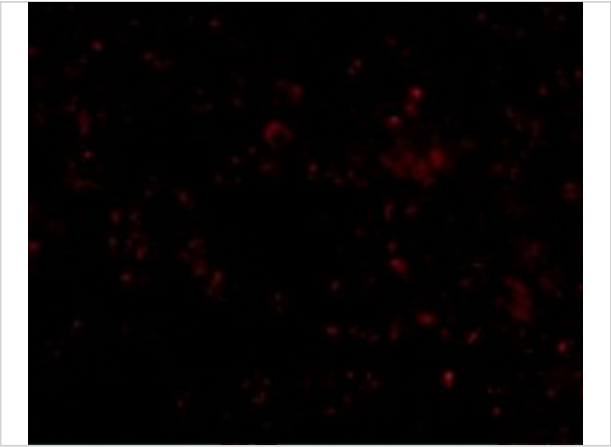
SCARB1 Antibody 1

Western blot analysis of SCARB1 in human spleen tissue lysate with SCARB1 antibody at (A) 1 and (B) 2 $\mu\text{g/mL}$.



SCARB1 Antibody 2

Immunohistochemistry of SCARB1 in human spleen tissue with SCARB1 antibody at 2.5 $\mu\text{g/mL}$.



SCARB1 Antibody 3

Immunofluorescence of SCARB1 in Human Spleen tissue with SCARB1 antibody at 20 $\mu\text{g/mL}$.

Disclaimer

Disclaimer	Optimal dilutions/concentrations should be determined by the end user. The information provided is a guideline for product use. This product is for research use only.
------------	--

For research use only. For additional information, visit ProSci's [Terms and Conditions Page](#).