

RSPO1 Antibody

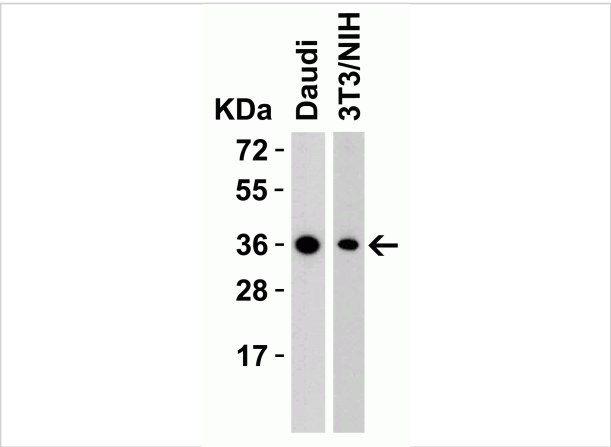
CATALOG NUMBER: 5171

Specifications

Host Species	Rabbit
Species Reactivity	Human, Mouse
Homology	Predicted species reactivity based on immunogen sequence: Rat (100%).
Immunogen	Anti-RSPO1 antibody (5171) was raised against a peptide corresponding to 16 amino acids near the amino terminus of human RSPO1. The immunogen is located within the first 50 amino acids of RSPO1.
Conjugate	Unconjugated
Tested Applications	ELISA, IF, IHC-P, WB
User Note	Optimal dilutions for each application to be determined by the researcher.
Specificity	At least three isoforms of RSPO1 are known to exist; this antibody will detect the largest and smallest isoforms. RSPO1 antibody will not cross-react with other RSPO family members.
Predicted Molecular Weight	Predicted: 29kD Observed: 36 kD (Post-modification: 1 N-linked glycosylation)

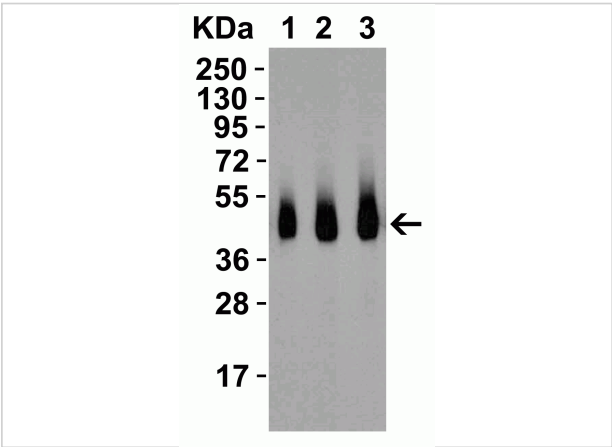
Properties

Purification	RSPO1 Antibody is affinity chromatography purified via peptide column.
Clonality	Polyclonal
Isotype	IgG
Physical State	Liquid
Buffer	RSPO1 Antibody is supplied in PBS containing 0.02% sodium azide.
Concentration	1 mg/mL
Storage Conditions	RSPO1 antibody can be stored at 4°C up to one year. Antibodies should not be exposed to prolonged high temperatures.



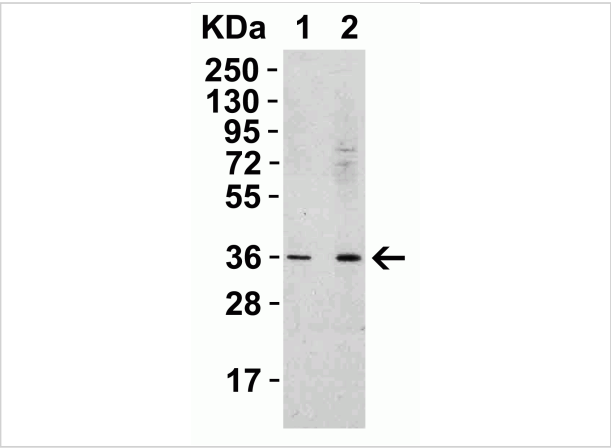
RSPO1 Antibody 1

Figure 1 Western Blot Validation in Human and Mouse Cell Lines
 Loading: 15 µg of lysates per lane. Antibodies: RSPO1, 5171 (2 µg/mL), 1h incubation at RT in 5% NFDm/TBST. Secondary...



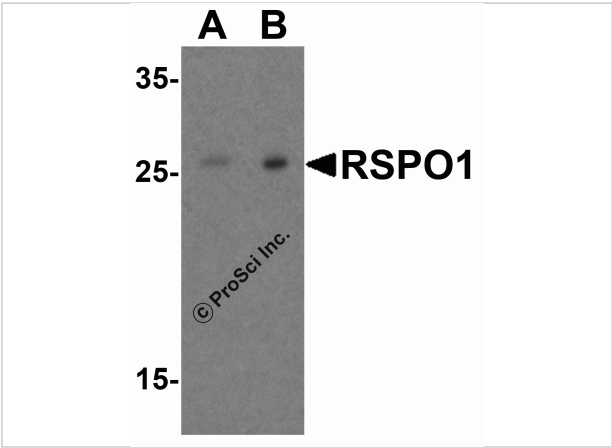
RSPO1 Antibody 2

Figure 2 Western Blot Validation with Recombinant Protein
 Loading: 30 ng of human RSPO1 recombinant protein per lane. Antibodies: RSPO1, 5171 (Lane 1: 0.5 µg/mL, Lane 2: 1 µg/mL, Lane 3: 2 µg/mL), 1h incubation at RT in 5% NFDm/TBST. Secondary...



RSPO1 Antibody 3

Figure 3 Western Blot Validation in Human Spleen
 Loading: 15 µg of lysates per lane. Antibodies: RSPO1, 5171 (Lane 1: 0.5 µg/mL, Lane 2: 1 µg/mL), 1h incubation at RT in 5% NFDm/TBST. Secondary...



RSPO1 Antibody 4

Figure 4 Western Blot Validation in Human Heart
 Loading: 15 µg of lysates per lane. Antibodies: RSPO1, 5171 (A: 1 µg/mL, B: 2 µg/mL), 1h incubation at RT in 5% NFDm/TBST. Secondary...

Disclaimer

Disclaimer	Optimal dilutions/concentrations should be determined by the end user. The information provided is a guideline for product use. This product is for research use only.
-------------------	--

For research use only. For additional information, visit ProSci's [Terms and Conditions Page](#).