

IRF3 Antibody

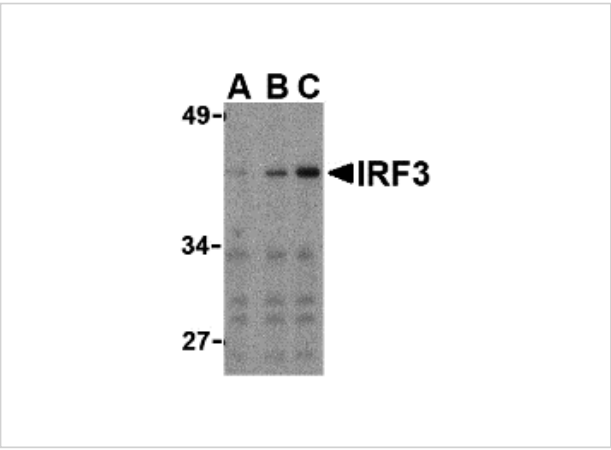
CATALOG NUMBER: 3397

Specifications

Host Species	Rabbit
Species Reactivity	Human, Mouse
Homology	Predicted species reactivity based on immunogen sequence: Bovine: (86%), Pig: (79%)
Immunogen	IRF3 antibody was raised against a peptide corresponding to 14 amino acids near the carboxy terminus of human IRF3. The immunogen is located within amino acids 330 - 380 of IRF3.
Conjugate	Unconjugated
Tested Applications	ELISA, IF, IHC-P, WB
User Note	Optimal dilutions for each application to be determined by the researcher.
Specificity	At least three isoforms of IRF3 are known to exist.
Predicted Molecular Weight	43, 47, 50 kDa

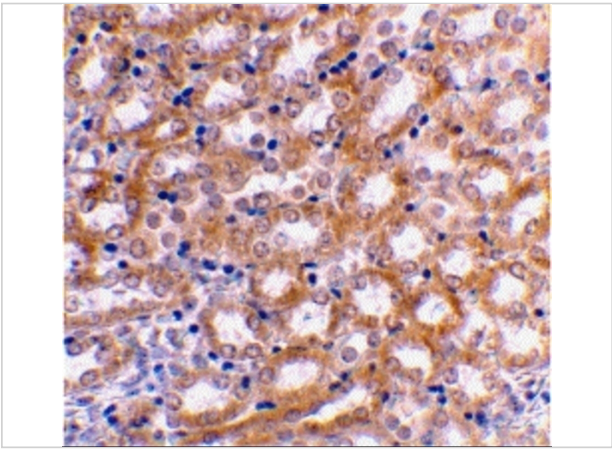
Properties

Purification	IRF3 Antibody is affinity chromatography purified via peptide column.
Clonality	Polyclonal
Isotype	IgG
Physical State	Liquid
Buffer	IRF3 Antibody is supplied in PBS containing 0.02% sodium azide.
Concentration	1 mg/mL
Storage Conditions	IRF3 antibody can be stored at 4°C for three months and -20°C, stable for up to one year. As with all antibodies care should be taken to avoid repeated freeze thaw cycles. Antibodies should not be exposed to prolonged high temperatures.



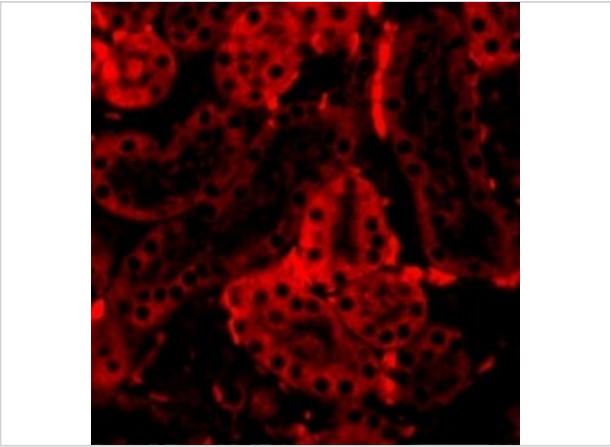
IRF3 Antibody 1

Western blot analysis of IRF3 in Ramos whole cell lysate with IRF3 antibody at (A) 1, (B) 2, and (C) 4 $\mu\text{g/mL}$.



IRF3 Antibody 2

Immunohistochemical staining of mouse kidney using IRF3 antibody at 2 $\mu\text{g/mL}$.



IRF3 Antibody 3

Immunofluorescence of IRF3 in Mouse Kidney cells with IRF3 antibody at 20 $\mu\text{g/mL}$.

Disclaimer

Disclaimer	Optimal dilutions/concentrations should be determined by the end user. The information provided is a guideline for product use. This product is for research use only.
-------------------	--

For research use only. For additional information, visit ProSci's [Terms and Conditions Page](#).