

## FTO Antibody

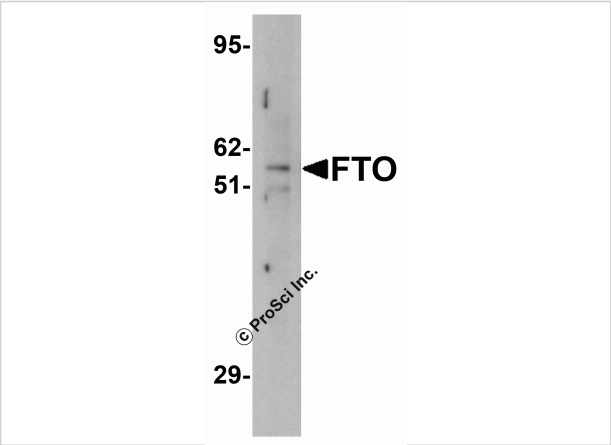
CATALOG NUMBER: 5137

### Specifications

Host Species	Rabbit
Species Reactivity	Human
Homology	Predicted species reactivity based on immunogen sequence: Rat: (100%), Mouse: (100%)
Immunogen	FTO antibody was raised against a 15 amino acid synthetic peptide from near the amino terminus of human FTO. The immunogen is located within the first 50 amino acids of FTO.
Conjugate	Unconjugated
Tested Applications	ELISA, IF, IHC-P, WB
User Note	Optimal dilutions for each application to be determined by the researcher.

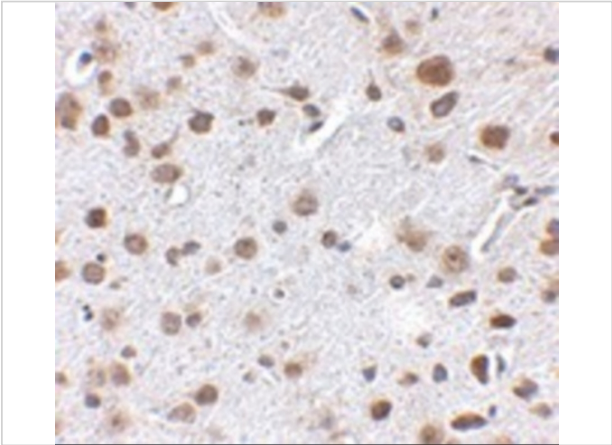
### Properties

Purification	FTO Antibody is affinity chromatography purified via peptide column.
Clonality	Polyclonal
Isotype	IgG
Physical State	Liquid
Buffer	FTO Antibody is supplied in PBS containing 0.02% sodium azide.
Concentration	1 mg/mL
Storage Conditions	FTO antibody can be stored at 4°C for three months and -20°C, stable for up to one year. As with all antibodies care should be taken to avoid repeated freeze thaw cycles. Antibodies should not be exposed to prolonged high temperatures.



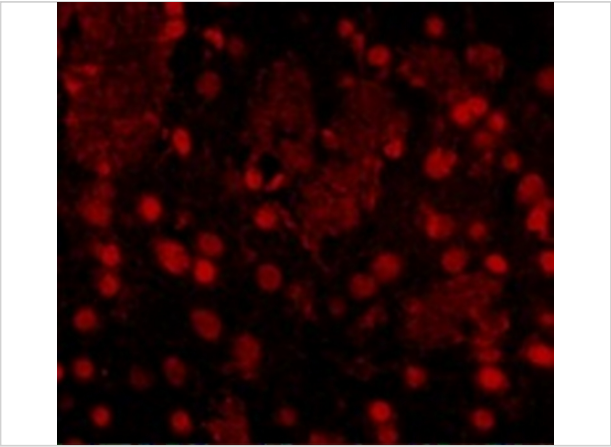
FTO Antibody 1

Western blot analysis of FTO in human uterus tissue lysate with FTO antibody at (A) 1 and (B) 2 µg/mL.



FTO Antibody 2

Immunohistochemistry of FTO in mouse brain tissue with FTO antibody at 2.5 µg/mL.



FTO Antibody 3

Immunofluorescence of FTO in Mouse Brain cells with FTO antibody at 20 µg/mL.

Disclaimer

Disclaimer	Optimal dilutions/concentrations should be determined by the end user. The information provided is a guideline for product use. This product is for research use only.
------------	--

For research use only. For additional information, visit ProSci's [Terms and Conditions Page](#).