

MTCH2 Antibody

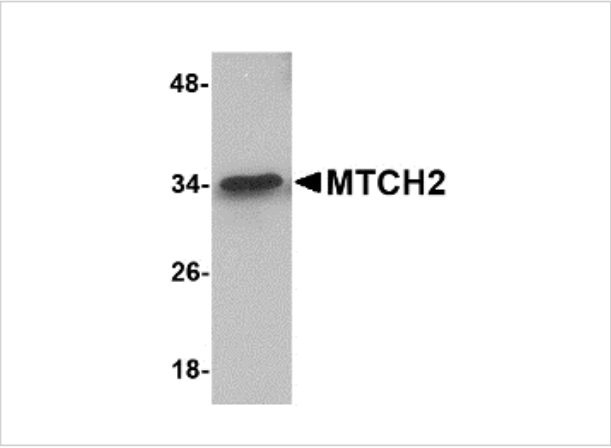
CATALOG NUMBER: 5063

Specifications

Host Species	Rabbit
Species Reactivity	Human, Mouse
Homology	Predicted species reactivity based on immunogen sequence: Bovine: (75%)
Immunogen	MTCH2 antibody was raised against a 15 amino acid synthetic peptide near the amino terminus of human MTCH2. The immunogen is located within amino acids 80 - 130 of MTCH2.
Conjugate	Unconjugated
Tested Applications	ELISA, IF, IHC-P, WB
User Note	Optimal dilutions for each application to be determined by the researcher.

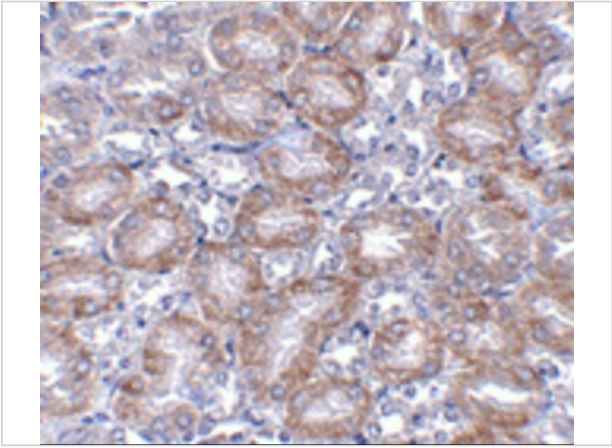
Properties

Purification	MTCH2 Antibody is affinity chromatography purified via peptide column.
Clonality	Polyclonal
Isotype	IgG
Physical State	Liquid
Buffer	MTCH2 Antibody is supplied in PBS containing 0.02% sodium azide.
Concentration	1 mg/mL
Storage Conditions	MTCH2 antibody can be stored at 4°C for three months and -20°C, stable for up to one year. As with all antibodies care should be taken to avoid repeated freeze thaw cycles. Antibodies should not be exposed to prolonged high temperatures.



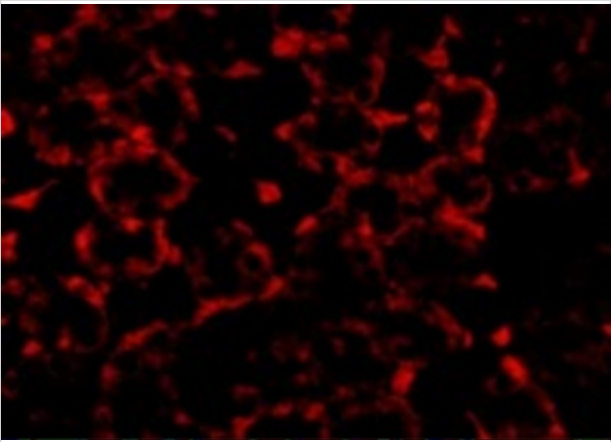
MTCH2 Antibody 1

Western blot analysis of MTCH2 in 293 cell lysate with MTCH2 antibody at 1 µg/mL.



MTCH2 Antibody 2

Immunohistochemistry of MTCH2 in mouse kidney tissue with MTCH2 antibody at 5 µg/mL.



MTCH2 Antibody 3

Immunofluorescence of MTCH2 in Mouse Kidney cells with MTCH2 antibody at 20 µg/mL.

Disclaimer

Disclaimer	Optimal dilutions/concentrations should be determined by the end user. The information provided is a guideline for product use. This product is for research use only.
------------	--

For research use only. For additional information, visit ProSci's [Terms and Conditions Page](#).