

## SPG15 Antibody

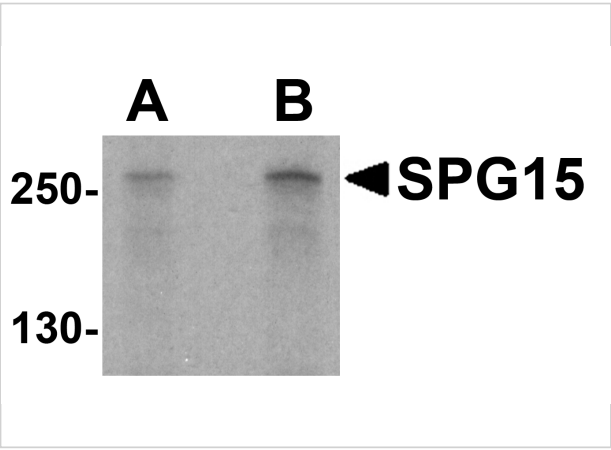
CATALOG NUMBER: 5023

### Specifications

Host Species	Rabbit
Species Reactivity	Human, Mouse, Rat
Homology	Predicted species reactivity based on immunogen sequence: Bovine: (94%)
Immunogen	SPG15 antibody was raised against a 16 amino acid synthetic peptide near the carboxy terminus of human SPG15. The immunogen is located within amino acids 1710 - 1760 of SPG15.
Conjugate	Unconjugated
Tested Applications	ELISA, IF, WB
User Note	Optimal dilutions for each application to be determined by the researcher.
Specificity	Multiple isoforms of SPG15 are known to exist.
Predicted Molecular Weight	Predicted: 280 kDa Observed: 260 kDa

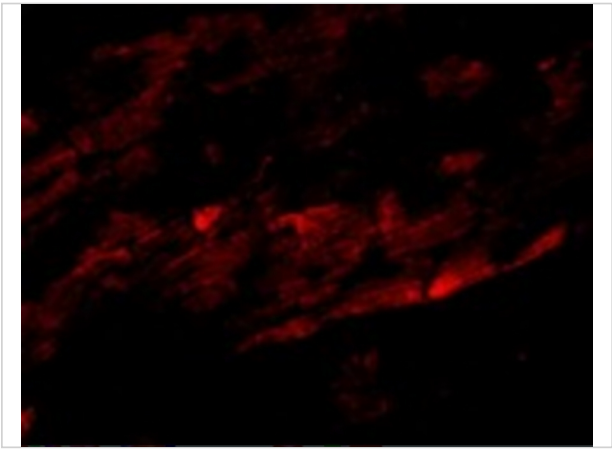
### Properties

Purification	SPG15 Antibody is affinity chromatography purified via peptide column.
Clonality	Polyclonal
Isotype	IgG
Physical State	Liquid
Buffer	SPG15 Antibody is supplied in PBS containing 0.02% sodium azide.
Concentration	1 mg/mL
Storage Conditions	SPG15 antibody can be stored at 4°C for three months and -20°C, stable for up to one year. As with all antibodies care should be taken to avoid repeated freeze thaw cycles. Antibodies should not be exposed to prolonged high temperatures.



**SPG15 Antibody 1**

Western blot analysis of SPG15 in K562 cell lysate with SPG15 antibody at (A) 1 and (B) 2 µg/mL.



**SPG15 Antibody 2**

Immunofluorescence of SPG15 in Mouse Heart tissue with SPG15 antibody at 20 µg/mL.

**Disclaimer**

<b>Disclaimer</b>	Optimal dilutions/concentrations should be determined by the end user. The information provided is a guideline for product use. This product is for research use only.
-------------------	--

For research use only. For additional information, visit ProSci's [Terms and Conditions Page](#).