

TREX2 Antibody

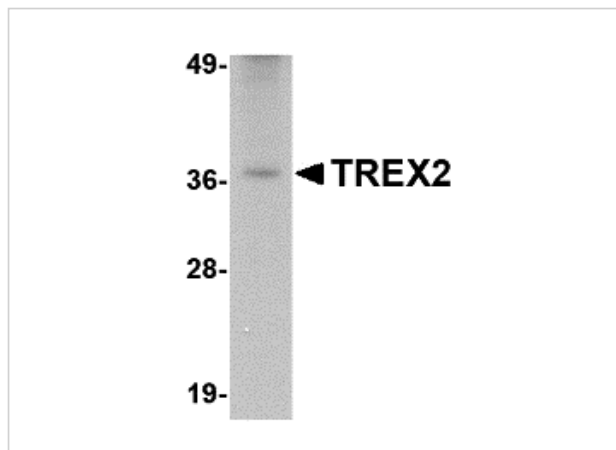
CATALOG NUMBER: 4971

Specifications

Host Species	Rabbit
Species Reactivity	Human, Mouse, Rat
Immunogen	TREX2 antibody was raised against a 15 amino acid synthetic peptide near the carboxy terminus of human TREX2. The immunogen is located within the last 50 amino acids of TREX2.
Conjugate	Unconjugated
Tested Applications	ELISA, IF, IHC-P, WB
User Note	Optimal dilutions for each application to be determined by the researcher.
Specificity	This TREX2 antibody will not cross-react with the related protein TREX1.

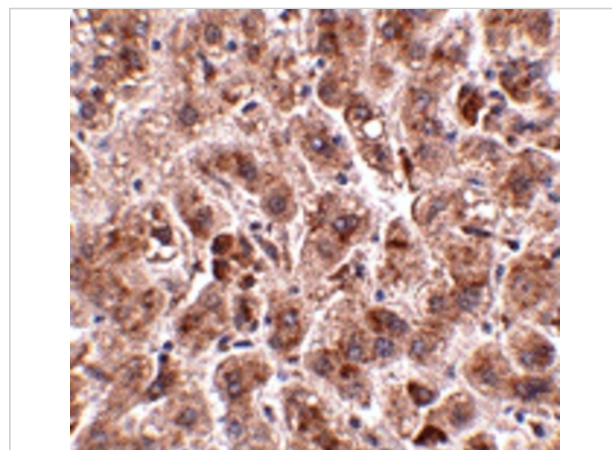
Properties

Purification	TREX2 Antibody is affinity chromatography purified via peptide column.
Clonality	Polyclonal
Isotype	IgG
Physical State	Liquid
Buffer	TREX2 Antibody is supplied in PBS containing 0.02% sodium azide.
Concentration	1 mg/mL
Storage Conditions	TREX2 antibody can be stored at 4°C for three months and -20°C, stable for up to one year. As with all antibodies care should be taken to avoid repeated freeze thaw cycles. Antibodies should not be exposed to prolonged high temperatures.



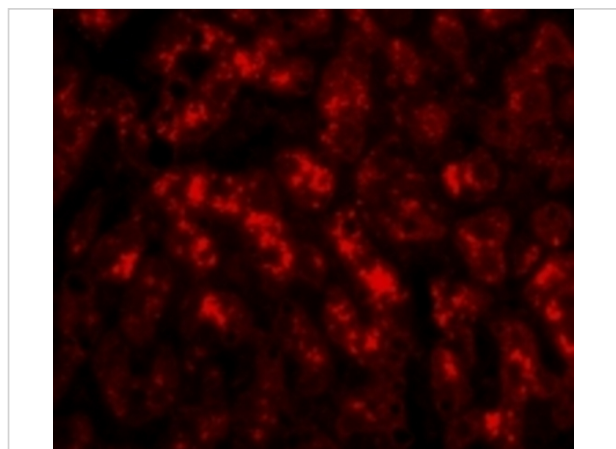
TREX2 Antibody 1

Western blot analysis of TREX2 in rat liver tissue lysate with TREX2 antibody at 2.5 µg/mL.



TREX2 Antibody 2

Immunohistochemistry of TREX2 in human liver tissue with TREX2 antibody at 2.5 µg/mL.



TREX2 Antibody 3

Immunofluorescence of TREX2 in Human Liver cells with TREX2 antibody at 20 µg/mL.

Disclaimer

Disclaimer

Optimal dilutions/concentrations should be determined by the end user. The information provided is a guideline for product use. This product is for research use only.

For research use only. For additional information, visit ProSci's [Terms and Conditions Page](#).