

Bid Antibody

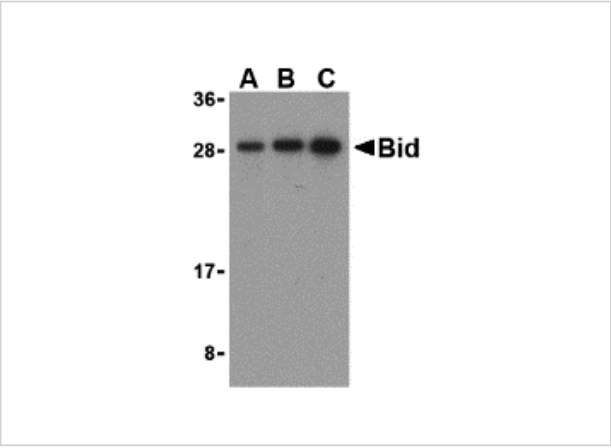
CATALOG NUMBER: 3353

Specifications

Host Species	Rabbit
Species Reactivity	Human, Mouse
Immunogen	Bid antibody was raised against a peptide corresponding to 14 amino acids near the carboxy terminus of human Bid. The immunogen is located within amino acids 120 - 170 of Bid.
Conjugate	Unconjugated
Tested Applications	ELISA, IF, IHC-P, WB
User Note	Optimal dilutions for each application to be determined by the researcher.

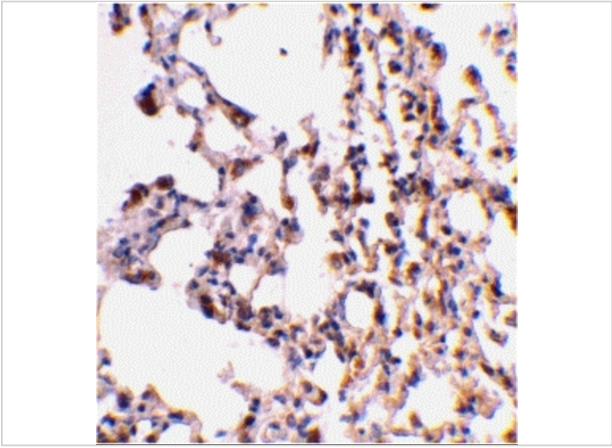
Properties

Purification	Bid Antibody is Ion exchange chromatography purified.
Clonality	Polyclonal
Isotype	IgG
Physical State	Liquid
Buffer	Bid Antibody is supplied in PBS containing 0.02% sodium azide.
Concentration	1 mg/mL
Storage Conditions	Bid antibody can be stored at 4°C for three months and -20°C, stable for up to one year. As with all antibodies care should be taken to avoid repeated freeze thaw cycles. Antibodies should not be exposed to prolonged high temperatures.



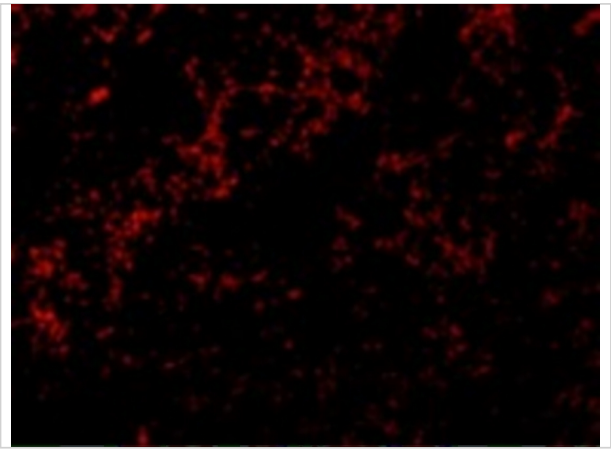
Bid Antibody 1

Western blot analysis of Bid in mouse lung cell lysates with Bid antibody at (A) 0.5, (B) 1, and (C) 2 $\mu\text{g/mL}$.



Bid Antibody 2

Immunohistochemical staining of mouse lung tissue using Bid antibody at 2 $\mu\text{g/mL}$.



Bid Antibody 3

Immunofluorescence of Bid in Mouse Lung cells with Bid antibody at 10 $\mu\text{g/mL}$.

Disclaimer

Disclaimer	Optimal dilutions/concentrations should be determined by the end user. The information provided is a guideline for product use. This product is for research use only.
-------------------	--

For research use only. For additional information, visit ProSci's [Terms and Conditions Page](#).