

Aipl1 Antibody

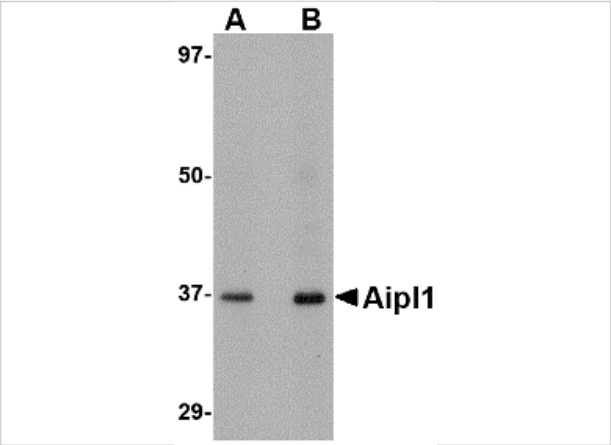
CATALOG NUMBER: 4853

Specifications

Host Species	Rabbit
Species Reactivity	Human, Mouse
Homology	Predicted species reactivity based on immunogen sequence: Rat: (76%)
Immunogen	Aipl1 antibody was raised against a 17 amino acid synthetic peptide near the carboxy terminus of the human Aipl1. The immunogen is located within amino acids 290 - 340 of Aipl1.
Conjugate	Unconjugated
Tested Applications	ELISA, IF, IHC-P, WB
User Note	Optimal dilutions for each application to be determined by the researcher.

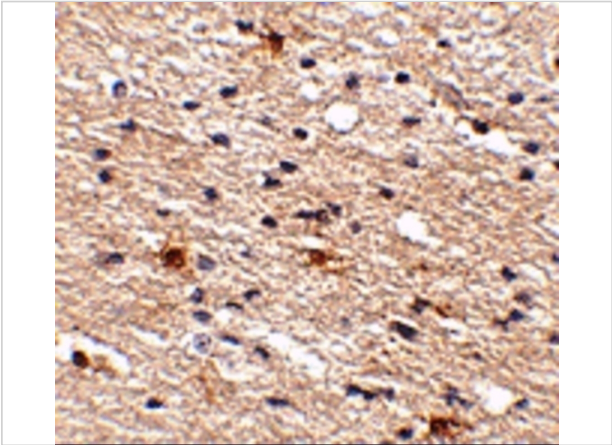
Properties

Purification	Aipl1 Antibody is affinity chromatography purified via peptide column.
Clonality	Polyclonal
Isotype	IgG
Physical State	Liquid
Buffer	Aipl1 Antibody is supplied in PBS containing 0.02% sodium azide.
Concentration	1 mg/mL
Storage Conditions	Aipl1 antibody can be stored at 4°C for three months and -20°C, stable for up to one year. As with all antibodies care should be taken to avoid repeated freeze thaw cycles. Antibodies should not be exposed to prolonged high temperatures.



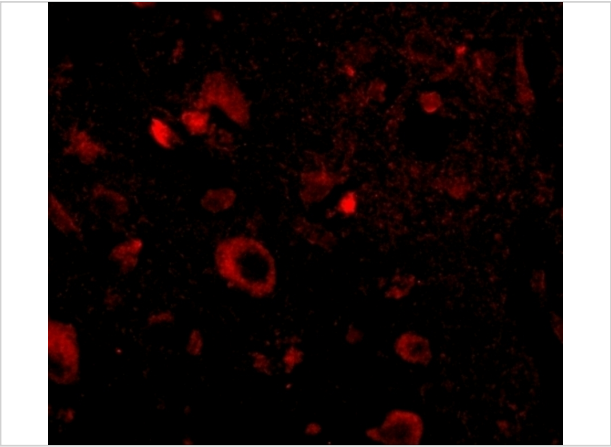
Aipl1 Antibody 1

Western blot analysis of Aipl1 in human brain tissue lysate with Aipl1 antibody at (A) 1 and (B) 2 µg/mL.



Aipl1 Antibody 2

Immunohistochemistry of Aipl1 in human brain tissue with Aipl1 antibody at 2.5 µg/mL.



Aipl1 Antibody 3

Immunofluorescence of aipl1 in human brain tissue with aipl1 antibody at 20 µg/mL.

Disclaimer

Disclaimer	Optimal dilutions/concentrations should be determined by the end user. The information provided is a guideline for product use. This product is for research use only.
-------------------	--

For research use only. For additional information, visit ProSci's [Terms and Conditions Page](#).